

**Board of Selectmen & Assessors Meeting - Agenda**  
**October 13, 2020 @ 7:00p.m.**  
**Via Zoom Meeting/YouTube Live Streaming**

**1. Call to Order:**

**2. Amendments to the Agenda (Pending Approval)**

**3. Minutes**

4.1 September 29, 2020

**4. New Business**

4.1 LED Streetlight Conversion

**5. Unfinished Business**

5.1 Academy Hill/Roads Projects Status Update – Seth Hagar

**6. Town Manager Report and Communications**

**7. Fiscal Warrants**

7.1 Town Warrant \$ 254,307.53

7.2 Academy Hill \$76,060.56

**8. Board of Assessors**

**9. Executive Session(s)**

9.1 Real Estate

**10. Adjournment**

*Public Comments Regarding Items On The Agenda Can Be Sent To The Town Manager's Email Prior To The Meeting For Circulation To The Rest Of The Board (townmanager@newcastlemaine.us)*

**Upcoming Events**

Joint Public Hearing – Planning Board – Monday, October 19<sup>th</sup> 6:30pm Zoom/YouTube

Board of Selectmen – Monday, October 26<sup>th</sup> Zoom/YouTube

Election Day – Tuesday, November 3<sup>rd</sup> 8:00am – 8:00pm Fire Station

Town Office Closed – Election Day – Tuesday, November 3<sup>rd</sup>, Office Re-Opens Wednesday November 4<sup>th</sup> at Noon.

For Updated Information Please Check The Town's Facebook/Twitter accounts and Town's Website: newcastlemaine.us

*Executive Session 1 M.R.S.A. Section 405 (6) A – Personnel, C – Real Estate, D - Labor Contracts, E – Legal, H – Consultation With CEO Concerning Enforcement Action*



**General Scope of Work & Project Cost**

Quantity of Cobraheads:	43
Quantity of Decoratives/Floods:	2
Total Quantity of Fixtures:	45

Item	Total
<b>LED Lighting Upgrade Project Cost</b>	<b>\$ 23,493</b>
Utility Acquisition Cost:	\$ 3,938
<b>Total Project Cost + Acquisition:</b>	<b>\$ 27,431</b>

**Baseline Inventory**

HID Fixture type	HID System Wattage	Quantity	Demand (kW)
Cobrahead - HID 50W	65	3	0.2
Cobrahead - HID 70W	95	1	0.1
Cobrahead - HID 100W	130	30	3.9
Cobrahead - HID 175W	205	2	0.4
Cobrahead - HID 200W	250	1	0.3
Cobrahead - New Light Request	N/A	8	N/A
Decorative - Acorn Post Top - HID 100W	130	2	0.3
<b>TOTAL</b>		<b>47</b>	<b>5.1</b>

Note: Two (2) 50W HID Cobraheads to be removed only from inventory as per RTE design suggestion.

**Replacement LED Inventory**

LED Replacement	LED Wattage	Quantity	Demand (kW)
28W_ATBX P40 MVOLT R2 27K MP NL P7	28	15	0.4
41W_ATBX P50 MVOLT R2 27K MP NL P7	41	14	0.6
41W_ATBX P50 MVOLT R4 27K MP NL P7	41	6	0.2
60W_ATBX P70 MVOLT R2 27K MP NL P7	60	8	0.5
66W_WFCL2 P30 27K AS BK L3 N P7E NL1X1	66	2	0.1
<b>TOTAL</b>		<b>45</b>	<b>1.9</b>

**Energy and Cost Savings**

Parameter (Annual):	Before Upgrade	Post Upgrade	Savings	Savings (%)
<b>Energy Consumption (kWh)</b>	<b>21,769</b>	<b>7,890</b>	<b>13,879</b>	<b>64%</b>
Lighting Equipment Charges	\$4,473	\$0	\$4,473	100%
Delivery Charges	\$1,407	\$531	\$876	62%
Supply Charges	\$1,358	\$515	\$842	62%
Maintenance Cost	\$0	\$810	(\$810)	
<b>Total Street Lights Expenditures</b>	<b>\$7,237</b>	<b>\$1,856</b>	<b>\$5,381</b>	<b>74%</b>
Average Cost per Fixture	\$161	\$41	\$120	74%

**Payback and Net Project Savings**

**Project Payback: 4.7 years**  
**20 Year Net Project Savings: \$ 117,837**

**Smart Controls Option**

Number of Fixtures	45
--------------------	----

Net Adder for Smart Controls	\$ 5,088
<b>Total Project Cost with Smart Controls</b>	<b>\$ 28,581</b>
<b>Total Project Cost with Smart Controls + Acquisition</b>	<b>\$ 32,519</b>
Payback with Smart Controls	5.5 years

**Notes**

- LED Technology Specified: Smart ready LED Fixtures: 7-PIN, Dimmable Drivers. Fixture, Photocell and Smart Control (if selected option) Warranty: 10 years.
- Before upgrade, the maintenance cost is included in the electricity cost. After the acquisition of the lighting system, the Town will be responsible for the maintenance cost of the new LED lighting system. Estimated new maintenance cost includes only the warranty maintenance cost of the fixtures and photocells.
- For a complete breakdown of the material and labor scope of work and pricing, please refer to Appendix D. Total project cost includes are recommended spare inventory which include 4 fixtures: 1 QTY 28W, 2 QTY 41W and 1 QTY 60W ATBX Cobrahead.
- The project is inclusive of installation allowances RTE recommends to include, including but not limited to: 100% new fuse and new fuse holder, 13 new 1-15 ft wiring, 4 new 16-30 ft wiring, 9 new 6ft arms, 1 new 8ft arm, 2 arm re-orientation, 2 arm and fixture re-locations, removal of 2 fixtures, flagging services for 10% of inventory, Troubleshooting Commissioning Allowance, etc. Please refer to the Appendix D) Project Cost Summary for more details.
- Energy Escalation rate (annual): 3% and O&M Savings Escalation rate (annual): 2%
- Smart Controls include Central Management Software and connectivity fees for the first year. The ongoing fees is \$3.50/node/year. Smart Controls representative of Ubiquaia.
- Please refer to the respective appendices for: Appendix A) Streetlight Inventory, Appendix B) Lighting Designs Layouts, Appendix C) Product specification sheets, Appendix D) Project Cost Summary, Appendix E) Product Warranty Documents and Appendix F) Warranty Service Agreement.
- Any Police detail fees, if applicable, are not included and would be extra subject to electrical contractor markup and RTE fees.
- Any possible additional fees associated with CMP approving the new light location or any relocations are not included. Connection fees, if applicable, will be paid directly by the Town to the utility.
- Total project cost does not include any applicable tax.
- This IGA is valid until October 31, 2020.

Should the Town wish to proceed with the above scope of work, please sign below:

Smart Controls Option Only: Please initialize if the Town would like to proceed with smart controls.

Authorized Signature

Authorized Initials

\* Leave above field blank if selecting the photocell option

Name (Please print)

Title (Please print)

Date



Consistent with LEED® goals  
& Green Globes™ criteria  
for light pollution reduction

# Autobahn Series ATBX Roadway & Security Lighting

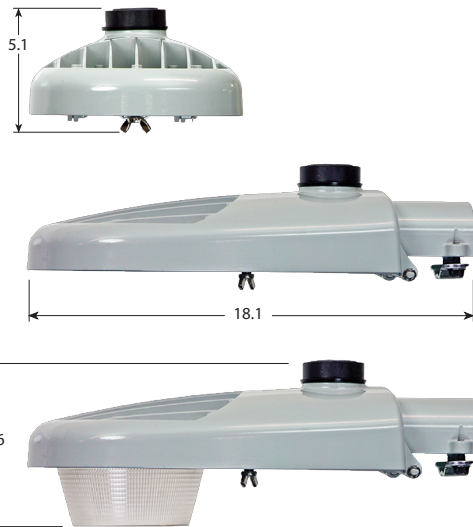
## PRODUCT OVERVIEW



### Applications:

- Residential streets
- Parking lots
- General security lighting

### DIMENSIONS



Effective Projected Area (EPA) The EPA for the ATBX is .26 sq. ft.  
Approx. Wt. = 8lbs.

### STANDARDS

DesignLights Consortium® (DLC) qualified product. Not all versions of this product may be DLC qualified. Please check the DLC Qualified Products List at [www.designlights.org/QPL](http://www.designlights.org/QPL) to confirm which versions are qualified.

Color temperatures of  $\leq 3000\text{K}$  must be specified for International Dark-Sky Association certification.

Rated for  $-40^{\circ}\text{C}$  to  $40^{\circ}\text{C}$  ambient

CSA Certified to U.S. and Canadian standards

Complies with ANSI: C136.2, C136.10, C136.14, C136.31, C136.15, C136.37

**Note:** Actual performance may differ as a result of end-user environment and application. Specifications subject to change without notice.

### Features:

#### OPTICAL

Same Light: Performance is comparable to 50W – 150W HPS and up to 175W Mercury Vapor roadway and security lighting luminaires.

White Light: Correlated color temperature - 4000K, 70 CRI minimum, 3000K, 70 CRI minimum or optional 5000K, 70 CRI minimum.

IP66 rated borosilicate glass optics ensure longevity and minimize dirt depreciation. Unique IP66 rated LED light engines provide 0% uplight and restrict backlight to within sidewalk depth, providing optimal application coverage and optimal pole spacing.

Available distributions are Type II, III, IV, and V roadway distributions. When used with the optional acrylic refractor the unit provides approximately 10% uplight and increased vertical foot-candles

#### ELECTRICAL

Expected Life: LED light engines are rated  $>100,000$  hours at  $25^{\circ}\text{C}$ , L70. Electronic driver has an expected life of 100,000 hours at a  $25^{\circ}\text{C}$  ambient.

Lower Energy: Saves an expected 40-60% over comparable HID luminaires.

Standard surge protection is 20kV/10kA "Extreme Level" per ANSI C136.2. An optional MOV pack provides 10kV/5kA "Enhanced Level."

#### MECHANICAL

Includes standard AEL lineman-friendly features such as tool-less entry, 3 station terminal block and quick disconnects. Bubble level located inside the electrical compartment for easy leveling at installation.

Rugged die-cast aluminum housing and door are polyester powder-coated for durability and corrosion resistance. Rigorous five-stage pre-treating and painting process yields a finish that achieves a scribe creepage rating of 8 (per ASTM D1654) after over 5000 hours exposure to salt fog chamber (operated per ASTM B117).

Mast arm mount is adjustable for arms from 1-1/4" to 2" (1-5/8" to 2-3/8" O.D.) diameter. The 2 – bolt clamping mechanism provides 3G vibration rating per ANSI C136.31.

#### CONTROLS

NEMA 3 pin photocontrol receptacle is standard, with the Acuity designed ANSI standard 7 pin receptacle optionally available.

Premium solid state locking-style photocontrol – PCSS (10 year rated life) Extreme long life solid state locking-style photocontrol – PCL1 (20 year rated life)

Optional onboard Adjustable Output module allows the light output and input wattage to be modified to meet site specific requirements, and also can allow a single fixture to be flexibly applied in many different applications.

# Autobahn Series ATBX

## Roadway & Security Lighting

### ORDERING INFORMATION

Series	Performance Packages	Voltage	Optics
<b>ATBX</b> Autobahn LED Roadway & Security	<b>P10</b> 2,000 lumens <b>P20</b> 2,500 lumens <b>P30</b> 3,200 lumens <b>P40</b> 3,900 lumens <b>P50</b> 5,600 lumens <b>P60</b> 6,600 lumens <b>P70</b> 7,400 lumens	<b>MVOLT</b> Multi-volt, 120-277V	<b>R2</b> Roadway Type II <b>R3</b> Roadway Type III <b>R4</b> Roadway Type IV <b>R5</b> Roadway Type V <b>D3</b> Type III, Drop Refractor included <b>D5</b> Type V, Drop Refractor included

### Options

#### Color Temperature (CCT)

<b>(Blank)</b>	4000K CCT, 70 CRI Min.
<b>3K</b>	3000K CCT, 70 CRI Min.
<b>5K</b>	5000K CCT, 70 CRI Min.

#### Paint

<b>Blank</b>	Gray (Standard)
<b>BK</b>	Black
<b>WH</b>	White
<b>BZ</b>	Bronze

#### Surge Protection

<b>Blank</b>	Standard 20kV/10kA SPD
<b>MP</b>	MOV Pack

#### Misc.

<b>VR</b>	Visual Comfort Refractor
<b>HSS</b>	House Side Shield
<b>NL</b>	NEMA Label
<b>XL</b>	Not CSA Certified

#### Controls

<b>(Blank)</b>	3 Pin NEMA Photocontrol Receptacle
<b>NR<sup>1</sup></b>	No Photocontrol Receptacle
<b>DM<sup>2</sup></b>	0V-10V Dimmable Driver
<b>P7</b>	7 Pin Photocontrol Receptacle (dimmable driver included)
<b>PCSS<sup>1</sup></b>	DTL DSS Photocontrol
<b>PCLL<sup>1</sup></b>	DTL DLL Photocontrol 120-277V
<b>AO</b>	Field Adjustable Output
<b>SH</b>	Shorting Cap

#### Packages

<b>(Blank)</b>	Standard Pack
<b>JP</b>	Job Pack

#### Install Packages

<b>PKGS</b>	DTL DSS Photocontrol
<b>PKGL</b>	DTL DLL Photocontrol

Packages ship with selected photocontrol, 24", 1 1/4" diameter arm, 5' of prewire and mounting hardware

#### Accessories

<b>ATBXREF</b>	Drop Refractor for field installation
<b>ATBXHSS</b>	House Side Shield for field installation
<b>ATBXLTS</b>	Light Trespass Shield for field installation
<b>ATBXVR-XX</b>	Comfort Refractor & Uplight Skirt, Select Paint (XX) to Match Fixture

#### Notes

1. Not available with Install Packages.
2. Not available with AO option.



AEL Headquarters, 3825 Columbus Road, Granville, OH 43023  
www.americanelectriclighting.com

© 2014-2020 Acuity Brands Lighting, Inc. All Rights Reserved. Rev. 03/11/20 ATBX

**Warranty** Five-year limited warranty. Complete warranty terms located at:

[www.acuitybrands.com/support/customer-support/terms-and-conditions](http://www.acuitybrands.com/support/customer-support/terms-and-conditions)

Actual performance may differ as a result of end-user environment and application. All values are design or typical values, measured under laboratory conditions at 25 °C. Specifications subject to change without notice.

*Please contact your sales representative for the latest product information.*

# Autobahn Series ATBX

## Roadway & Security Lighting

### PERFORMANCE PACKAGE

Performance Package	Distribution	Input Watts	3000K CCT, 70 CRI					4000K & 5000K CCT, 70 CRI					LLD @ 25C		
			Lumens	LPW	B	U	G	Lumens	LPW	B	U	G	50K Hours	75K Hours	100K Hours
P10	R2	14	1,956	140	1	0	1	2,030	145	1	0	1	0.92	0.89	0.85
	R3		1,955	140	0	0	1	2,011	144	0	0	1			
	R4		1,982	142	1	0	1	1,974	141	1	0	1			
	R5		2,145	153	1	0	0	2,160	154	1	0	0			
	D3		1,908	136	1	2	1	1,963	140	1	2	1			
	D5		2,077	148	1	2	1	2,092	149	1	2	1			
P20	R2	18	2,455	136	1	0	1	2,575	143	1	0	1	0.92	0.89	0.85
	R3		2,473	137	1	0	1	2,547	142	1	0	1			
	R4		2,505	139	1	0	1	2,497	139	1	0	1			
	R5		2,715	151	2	0	0	2,735	152	2	0	0			
	D3		2,414	134	1	2	1	2,486	138	1	2	1			
	D5		2,629	146	1	2	1	2,648	147	1	2	1			
P30	R2	23	3,102	135	1	0	1	3,243	141	1	0	1	0.92	0.89	0.85
	R3		3,125	136	1	0	1	3,232	141	1	0	1			
	R4		3,153	137	1	0	1	3,150	137	1	0	1			
	R5		3,422	149	2	0	1	3,431	149	2	0	1			
	D3		3,050	133	1	2	1	3,155	137	1	2	1			
	D5		3,314	144	1	2	1	3,322	144	1	2	1			
P40	R2	28	3,603	129	1	0	1	3,790	135	1	0	1	0.92	0.89	0.85
	R3		3,705	132	1	0	1	3,890	139	1	0	1			
	R4		3,640	130	1	0	2	3,817	136	1	0	2			
	R5		3,971	142	2	0	1	4,167	149	2	0	1			
	D3		3,617	129	1	2	2	3,797	136	1	2	2			
	D5		3,845	137	2	2	1	4,035	144	2	2	1			
P50	R2	41	5,426	132	2	0	2	5,425	132	2	0	2	0.92	0.89	0.85
	R3		5,248	128	1	0	2	5,615	137	1	0	2			
	R4		5,300	129	1	0	2	5,462	133	1	0	2			
	R5		5,647	138	3	0	1	6,033	147	3	0	1			
	D3		5,123	125	1	3	2	5,481	134	1	3	2			
	D5		5,468	133	2	3	2	5,842	142	2	3	2			
P60	R2	51	6,392	125	2	0	2	6,416	126	2	0	2	0.92	0.88	0.84
	R3		6,208	122	1	0	2	6,635	130	1	0	2			
	R4		6,207	122	1	0	2	6,432	126	1	0	2			
	R5		6,690	131	3	0	1	7,127	140	3	0	1			
	D3		6,059	119	1	3	2	6,477	127	1	3	2			
	D5		6,478	127	2	3	2	6,901	135	3	3	2			
P70	R2	60	7,133	140	2	0	2	7,246	142	2	0	2	0.92	0.88	0.84
	R3		6,967	137	1	0	2	7,449	146	1	0	2			
	R4		6,957	136	1	0	2	7,235	142	1	0	2			
	R5		7,492	147	3	0	1	7,939	156	3	0	1			
	D3		6,800	133	2	3	2	7,271	143	2	3	2			
	D5		7,255	142	3	3	2	7,688	151	3	3	2			



AEL Headquarters, 3825 Columbus Road, Granville, OH 43023  
www.americanelectriclighting.com

© 2014-2020 Acuity Brands Lighting, Inc. All Rights Reserved. Rev. 03/11/20 ATBX

**Warranty** Five-year limited warranty. Complete warranty terms located at: [www.acuitybrands.com/support/customer-support/terms-and-conditions](http://www.acuitybrands.com/support/customer-support/terms-and-conditions)  
Actual performance may differ as a result of end-user environment and application. All values are design or typical values, measured under laboratory conditions at 25 °C. Specifications subject to change without notice.

*Please contact your sales representative for the latest product information.*

# Autobahn Series ATBX

## Roadway & Security Lighting

### PERFORMANCE DATA with VISUAL COMFORT REFRACTOR

Performance Package	Distribution	Input Watts	3000K CCT, 70 CRI					4000K & 5000K CCT, 70 CRI					LLD @ 25C		
			Lumens	LPW	B	U	G	Lumens	LPW	B	U	G	50K Hours	75K Hours	100K Hours
P10	R2 with VR	14	1,686	120	1	0	1	1,747	125	1	0	1	0.92	0.89	0.85
	R3 with VR		1,669	119	1	0	1	1,698	121	1	0	1			
	R4 with VR		1,602	114	1	0	1	1,626	116	1	0	1			
	R5 with VR		1,814	130	1	0	1	1,862	133	1	0	1			
P20	R2 with VR	18	2,124	118	1	0	1	2,205	123	1	0	1	0.92	0.89	0.85
	R3 with VR		2,104	117	1	0	1	2,138	119	1	0	1			
	R4 with VR		2,019	112	1	0	1	2,053	114	1	0	1			
	R5 with VR		2,290	127	1	0	1	2,346	130	1	0	1			
P30	R2 with VR	23	2,684	117	1	0	1	2,788	121	1	0	1	0.92	0.89	0.85
	R3 with VR		2,659	116	1	0	1	2,699	117	1	0	1			
	R4 with VR		2,553	111	1	0	1	2,594	113	1	0	1			
	R5 with VR		2,892	126	2	0	1	2,969	129	2	0	1			
P40	R2 with VR	28	3,240	116	1	0	1	3,369	120	1	0	1	0.92	0.89	0.85
	R3 with VR		3,204	114	1	0	1	3,261	116	1	0	1			
	R4 with VR		3,081	110	1	0	2	3,124	112	1	0	2			
	R5 with VR		3,495	125	2	0	1	3,584	128	2	0	1			
P50	R2 with VR	41	4,633	113	1	0	2	4,818	118	1	0	2	0.92	0.89	0.85
	R3 with VR		4,499	110	1	0	2	4,617	113	1	0	2			
	R4 with VR		4,343	106	1	0	2	4,504	110	1	0	2			
	R5 with VR		4,869	119	2	0	1	5,117	125	2	0	1			
P60	R2 with VR	51	5,495	108	2	0	2	5,710	112	2	0	2	0.92	0.88	0.84
	R3 with VR		5,330	105	1	0	2	5,490	108	1	0	2			
	R4 with VR		5,145	101	1	0	2	5,328	104	1	0	2			
	R5 with VR		5,771	113	3	0	1	6,061	119	3	0	1			
P70	R2 with VR	60	6,167	121	2	0	2	6,396	125	2	0	2	0.92	0.88	0.84
	R3 with VR		5,978	117	1	0	2	6,110	120	1	0	2			
	R4 with VR		5,772	113	1	0	2	5,962	117	1	0	2			
	R5 with VR		6,482	127	3	0	1	6,799	133	3	0	2			



AEL Headquarters, 3825 Columbus Road, Granville, OH 43023  
 www.americanelectriclighting.com

© 2014-2020 Acuity Brands Lighting, Inc. All Rights Reserved. Rev. 03/11/20 ATBX

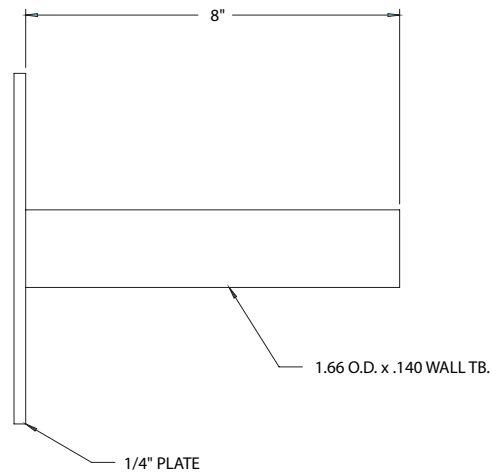
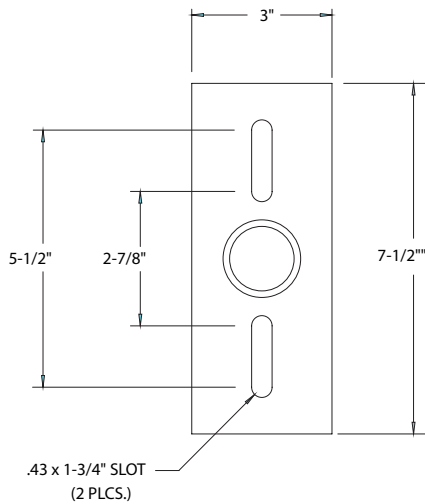
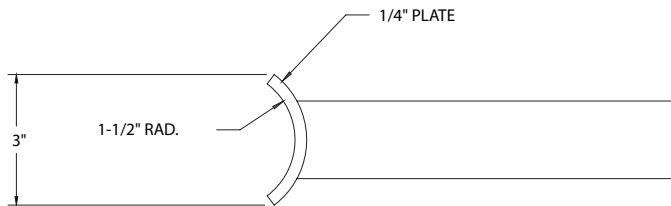
**Warranty** Five-year limited warranty. Complete warranty terms located at:  
[www.acuitybrands.com/support/customer-support/terms-and-conditions](http://www.acuitybrands.com/support/customer-support/terms-and-conditions)  
 Actual performance may differ as a result of end-user environment and application.  
 All values are design or typical values, measured under laboratory conditions at 25 °C.  
 Specifications subject to change without notice.

**Please contact your sales representative for the latest product information.**

# Autobahn Series ATBX Roadway & Security Lighting

## UMR POLE ADAPTOR

RECOMMENDED FOR USE WITH POLES OF 4" DIAMETER OR SMALLER



## UMS POLE ADAPTOR



AEL Headquarters, 3825 Columbus Road, Granville, OH 43023  
www.americanelectriclighting.com

© 2014-2020 Acuity Brands Lighting, Inc. All Rights Reserved. Rev. 03/11/20 ATBX

**Warranty** Five-year limited warranty. Complete warranty terms located at:  
[www.acuitybrands.com/support/customer-support/terms-and-conditions](http://www.acuitybrands.com/support/customer-support/terms-and-conditions)  
Actual performance may differ as a result of end-user environment and application.  
All values are design or typical values, measured under laboratory conditions at 25 °C.  
Specifications subject to change without notice.

*Please contact your sales representative for the latest product information.*

**OVERVIEW**

With a design life of 20+ years and superior in-rush current and surge-protection features, the DLL Elite support the extended life and low maintenance benefits associated with LED fixtures.

**FEATURES**

**APPLICATIONS**

- LED lighting fixtures that require dusk to dawn control
- High inrush current fixtures
- Designed to last as long as your LED lighting system, 20+ years
- LED inrush protection with TRIAC assisted relay
- Extreme surge protection of 1280J/40kA utility or 2120J/40kA UL listed
- Double thick enclosure and lens with additional UV inhibitor
- High temp base plastic tested to 140°C
- Long life capacitors
- Full wave rectified power supply
- Dual zener diodes for long life
- Solid brass contact blades
- Double sided, thru hole plated .062" FR4 circuit board
- Conformal coated printed circuit board
- Sealed packaging for extended storage

**SPECIFICATIONS**

**REGULATORY LISTINGS**

- ANSI C136.10
- ROHS compliant
- UL listed to U.S. and Canadian safety standards
- Surge rated in excess of ANSI C136.10 to 20kV/10kA

**OPERATING CHARACTERISTICS**

- Operating Levels: Turn-on at 1.5 FC and turn-off at 2.25 FC (On:Off ratio of 1:1.5)
- Operating temperature: -40C to 70C
- Voltage 120 to 480 VAC, 60Hz
- Load rating: 1000 watts, 1800 VA ballast
  - UL Load Rating: 1000VA
- Average power consumption: <0.5 watts @ 120V

**Warranty**

Ten-year limited warranty. Complete warranty terms located at: [www.acuitybrands.com/CustomerResources/Terms\\_and\\_conditions.aspx](http://www.acuitybrands.com/CustomerResources/Terms_and_conditions.aspx)

**Note:** Actual performance may differ as a result of end-user environment and application. Specifications subject to change without notice



*DLL Elite  
Electronic Locking  
Type Photocontrol*

**Standard**



**Low Profile**



**DLL STANDARD COLORS**

	Non-UL	UL
120-277V	Green	Blue
347V	Green	Green
480V	Yellow	Yellow

**ORDERING INFORMATION**

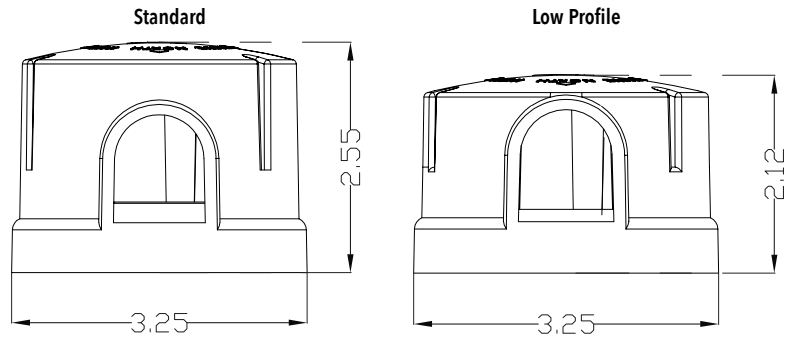
DLL PHOTOCONTROL										Example: DLL127 1.5 J50		
Series & Voltage	Failure Mode	Turn-On Level (fc)	Housing	Filter	Certification	Cover Color	Pkg. Qty.					
DLL127 120-277V DLL347 347V <sup>1</sup> DLL480 480V <sup>1</sup>	[blank] Fail On F Fail Off	1.5 ANSI Standard	[blank] Standard height LP Low Profile <sup>2</sup>	[blank] Silicon Sensor IR IR filtered silicon sensor	[blank] Standard CUL cULus listed <sup>3</sup>	[blank] See standard colors table above BK Black <sup>4</sup> BR Brown <sup>4</sup> GR Green <sup>4</sup> GY Gray <sup>4</sup> BL Blue <sup>4</sup> YL Yellow <sup>4</sup>	JU	1 Unit	J12	12 Units	J50	50 Units

**NOTES**

1. Only available with CUL certification option.
2. Not available with DLL347, DLL480, or CUL certification.
3. Color substitutions not allowed for cULus models.
4. Non-standard custom colors are non-stock items. Available in J12 and J50 only. Consult customer service.



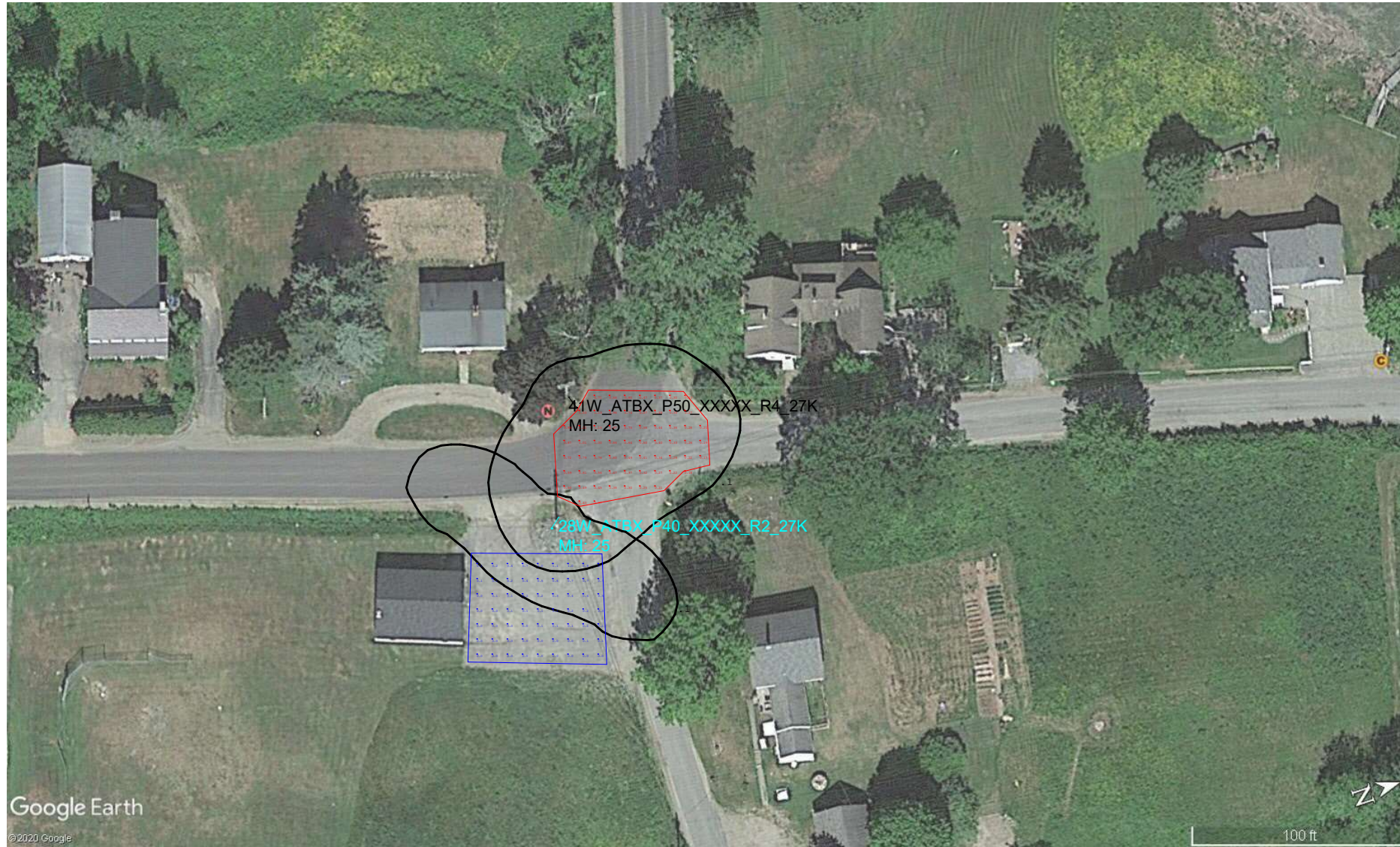
## DIMENSIONS



## STOCKED MODEL NUMBERS

Model #	Description	Pkg. Qty.
DLL127 1.5	120-277V Fail- On (non-UL)	J50
DLL127 1.5 BL	120-277V Fail- On (non-UL) Blue	J50
DLL127 1.5 GY	120-277V Fail- On (non-UL) Gray	J50
DLL127 1.5 BK	120-277V Fail- On (non-UL) Black	J50
DLL127F 1.5	120-277V Fail- Off (non-UL)	J50
DLL127 1.5 LP	120-277V Fail- On (non-UL) Low Profile	J50
DLL127 1.5 IR	120-277V Fail-On (non-UL) IR Filter	J50
DLL127 1.5 IR BK	120-277V Fail-On (non-UL) IR Filter Black	J50
DLL127 1.5 IR BL	120-277V Fail-On (non-UL) IR Filter Blue	J50
DLL127F 1.5 CUL	120-277V Fail- Off	J50
DLL127 1.5 CUL	120-277V Fail- On	J50
DLL347F 1.5 CUL	347V Fail- Off	J50
DLL347 1.5 CUL	347V Fail- On	J50
DLL480F 1.5 CUL	480V Fail- Off	J50
DLL480 1.5 CUL	480V Fail- On	J50

# Design 01 - Sheepscot & Newcastle Rd.AGI



Intersection RP-8-18 Recommendations:  
 Collector Isolated R2 & R3  
 Illuminance: 0.6 fc / 6 lux  
 E avg/min: 4

Parking lots RP-20-14 Recommendations:  
 LZ1 R2 - Pre-curfew  
 Minimum Horizontal Illuminance: 0.5 fc / 5 lux  
 Minimum Vertical Illuminance: 0.5 fc / 5 lux

Luminaire Schedule											
Symbol	Qty	Label	Arrangement	LLF	Arm	Lum. Watts	Lum. Lumens	[MANUFAC]	IES Class	BUG Rating	LER
—	1	28W_ATBX_P40_XXXXX_R2_27K	SINGLE	0.850	6	28	3108	American Electr	Type II	B1-U0-G1	111
—	1	41W_ATBX_P50_XXXXX_R4_27K	SINGLE	0.850	6	41	4479	American Electr	Type IV	B1-U0-G2	109

Calculation Summary												
Label	CalcType	Units	Avg	Max	Min	Avg/Min	Max/Min	Grid Z	Meter Tilt	Roadway Standard	LVRatio	RTable
Intersection	Illuminance	Fc	0.54	1.53	0.17	3.18	9.00	0	N.A	N.A.	N.A.	N.A.
Parking	Illuminance	Fc	0.22	1.1	0.0	N.A.	N.A.	0	N.A	N.A.	N.A.	N.A.

DISCLAIMER: Calculations have been performed according to IESNA & CIE standards and good practice. Some differences between measured values and calculated results may occur due to tolerances in calculation methods, testing procedures, component performance, measurement techniques and field conditions such as voltage and temperature variations. Input data used to generate the attached calculations such as road dimensions, mounting height, roadway surface and ambient lights significantly affect the lighting calculations. If the real environment conditions do not match the input data, differences will occur between measured values and calculated values. This document is property of RealTerm Energy. This document should not be used by others for construction purposes.



Annapolis | Montreal  
 1 (866) 422-5200  
 realtermenergy.com  
 info@realtermenergy.com

A division of Realterm Global

**Photometric Model:**

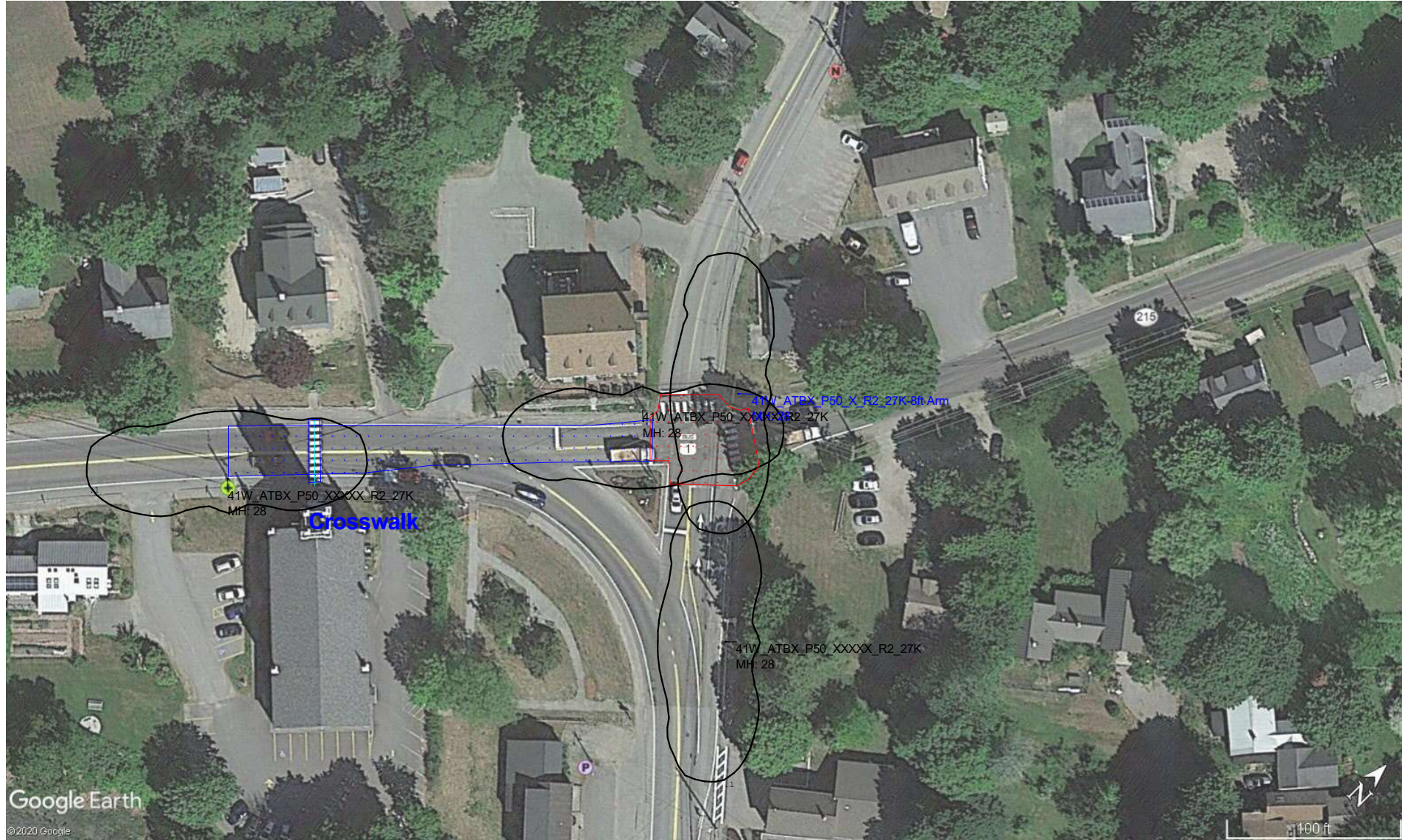
Roadway Design 01 - Sheepscot & Newcastle Rd.AGI

Designed by: Ali Faghih



Date : 2020-08-24  
 AGi32® Version 19.15.0

# Design 02 - Main St & Mills Rd.AGI



Intersection RP-8-18 Recommendations:  
 Collector / Collector Low R3  
 Illuminance: 1.2 fc / 12 lux  
 Eavg/min: 4

-----  
 Crosswalk RP-8-18 Recommendations:  
 E Vertical: 2.2 fc / 22 lux

-----  
 RP-8-18 Recommendations:  
 Collector Low R3  
 Luminance: 0.4 cd/m2  
 Lavg/min: 4  
 Lmax/min: 8  
 Veiling LVmax/Lavg: 0.4  
 Illuminance >= 0.6 fc / 6 lux

Luminaire Schedule											
Symbol	Qty	Label	Arrangement	LLF	Arm	Lum. Watts	Lum. Lumens	[MANUFAC]	IES Class	BUG Rating	LER
—	3	41W_ATBX_P50_XXXXX_R2_27K	SINGLE	0.850	6	41	4449	American Electr	Type II	B1-U0-G1	109
—	1	41W_ATBX_P50_X_R2_27K-8ft Arm	SINGLE	0.850	8	41	4449	American Electr	Type II	B1-U0-G1	109

Calculation Summary													
Label	CalcType	Units	Avg	Max	Min	Avg/Min	Max/Min	Grid Z	Meter Tilt	Roadway Standard	LVRatio	RTable	
Crosswalk	Illuminance	Fc	0.30	0.4	0.2	1.50	2.00	0	N.A	N.A.	N.A.	N.A.	
Crosswalk_Vertical Cal at	Illuminance	Fc	0.13	0.2	0.0	N.A.	N.A.	N.A	N.A	N.A.	N.A.	N.A.	
Intersection	Illuminance	Fc	0.84	1.64	0.22	3.82	7.45	0	N.A	N.A.	N.A.	N.A.	
Road	Illuminance	Fc	0.39	1.4	0.0	N.A.	N.A.	0	N.A	N.A.	N.A.	N.A.	

DISCLAIMER: Calculations have been performed according to IESNA & CIE standards and good practice. Some differences between measured values and calculated results may occur due to tolerances in calculation methods, testing procedures, component performance, measurement techniques and field conditions such as voltage and temperature variations. Input data used to generate the attached calculations such as road dimensions, mounting height, roadway surface and ambient lights significantly affect the lighting calculations. If the real environment conditions do not match the input data, differences will occur between measured values and calculated values. This document is property of RealTerm Energy. This document should not be used by others for construction purposes.



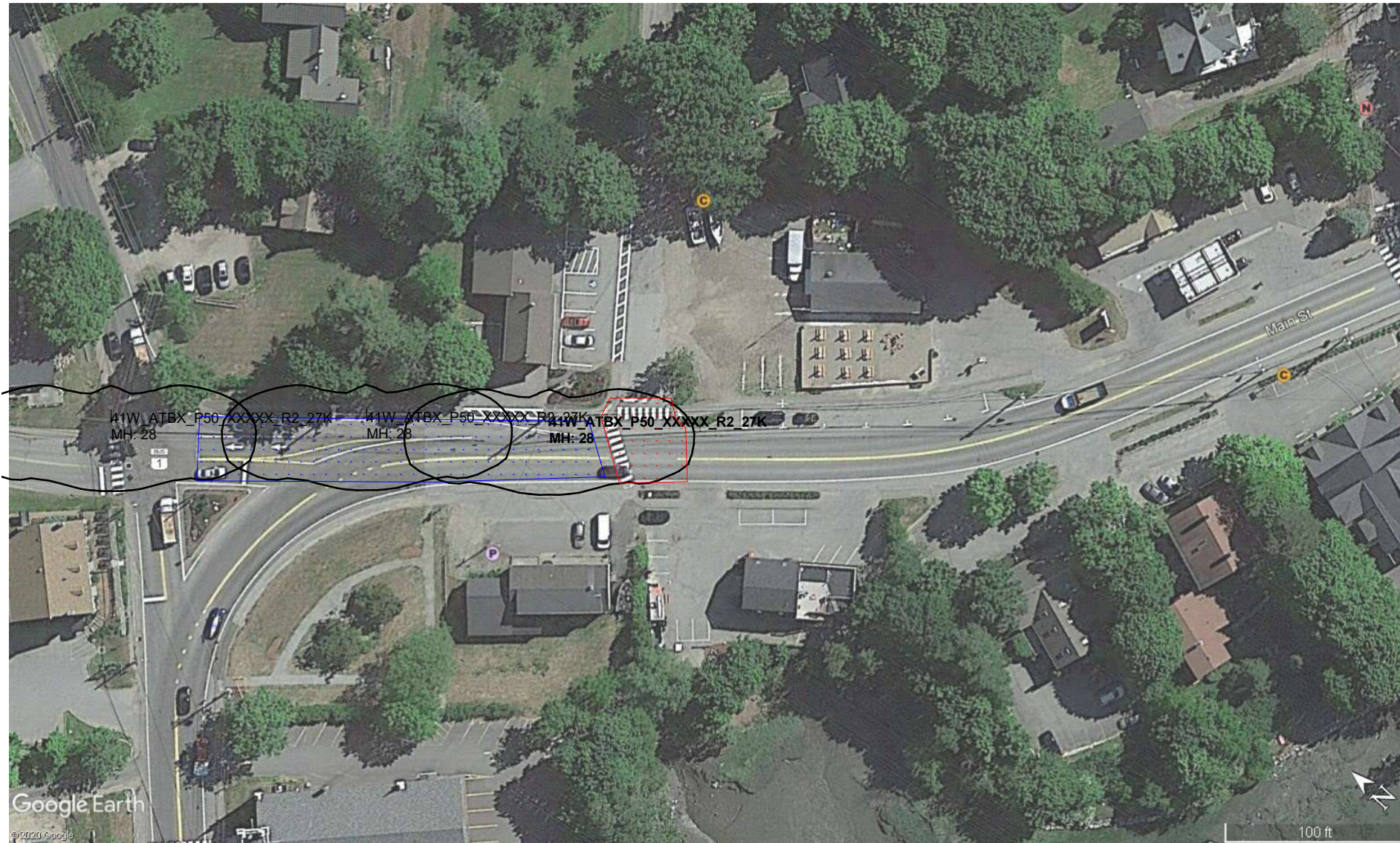
Annapolis | Montreal  
 1 (866) 422-5200  
 realtermenergy.com  
 info@realtermenergy.com  
 A division of Realterm Global

**Photometric Model:**  
 Roadway: Design 02 - Main St & Mills Rd.AGI  
 Designed by: Ali Faghih



Date : 2020-08-19  
 AGI32® Version 19.15.0

# Design 03 - Main St and Pump St.AGI



RP-8-18 Recommendations:  
 Collector Low R3  
 Luminance: 0.4 cd/m2  
 Lavg/min: 4  
 Lmax/min: 8  
 Veiling LVmax/Lavg: 0.4  
 Illuminance >= 0.6 fc / 6 lux

-----  
 Intersection RP-8-18 Recommendations:  
 Collector / Local Low R3  
 Illuminance: 1 fc / 10 lux  
 Eavg/min: 4

Luminaire Schedule											
Symbol	Qty	Label	Arrangement	LLF	Arm	Lum. Watts	Lum. Lumens	[MANUFAC]	IES Class	BUG Rating	LER
—	3	41W_ATBX_P50_XXXXX_R2_27K	SINGLE	0.850	6	41	4449	American Electr	Type II	B1-U0-G1	109

Calculation Summary													
Label	CalcType	Units	Avg	Max	Min	Avg/Min	Max/Min	Grid Z	Meter Tilt	Roadway Standard	LVRatio	RTable	
Intersection	Illuminance	Fc	0.25	0.63	0.08	3.13	7.88	0	N.A	N.A.	N.A.	N.A.	
Road	Illuminance	Fc	0.62	1.4	0.2	3.10	7.00	0	N.A	N.A.	N.A.	N.A.	

DISCLAIMER: Calculations have been performed according to IESNA & CIE standards and good practice. Some differences between measured values and calculated results may occur due to tolerances in calculation methods, testing procedures, component performance, measurement techniques and field conditions such as voltage and temperature variations. Input data used to generate the attached calculations such as road dimensions, mounting height, roadway surface and ambient lights significantly affect the lighting calculations. If the real environment conditions do not match the input data, differences will occur between measured values and calculated values. This document is property of RealTerm Energy. This document should not be used by others for construction purposes.

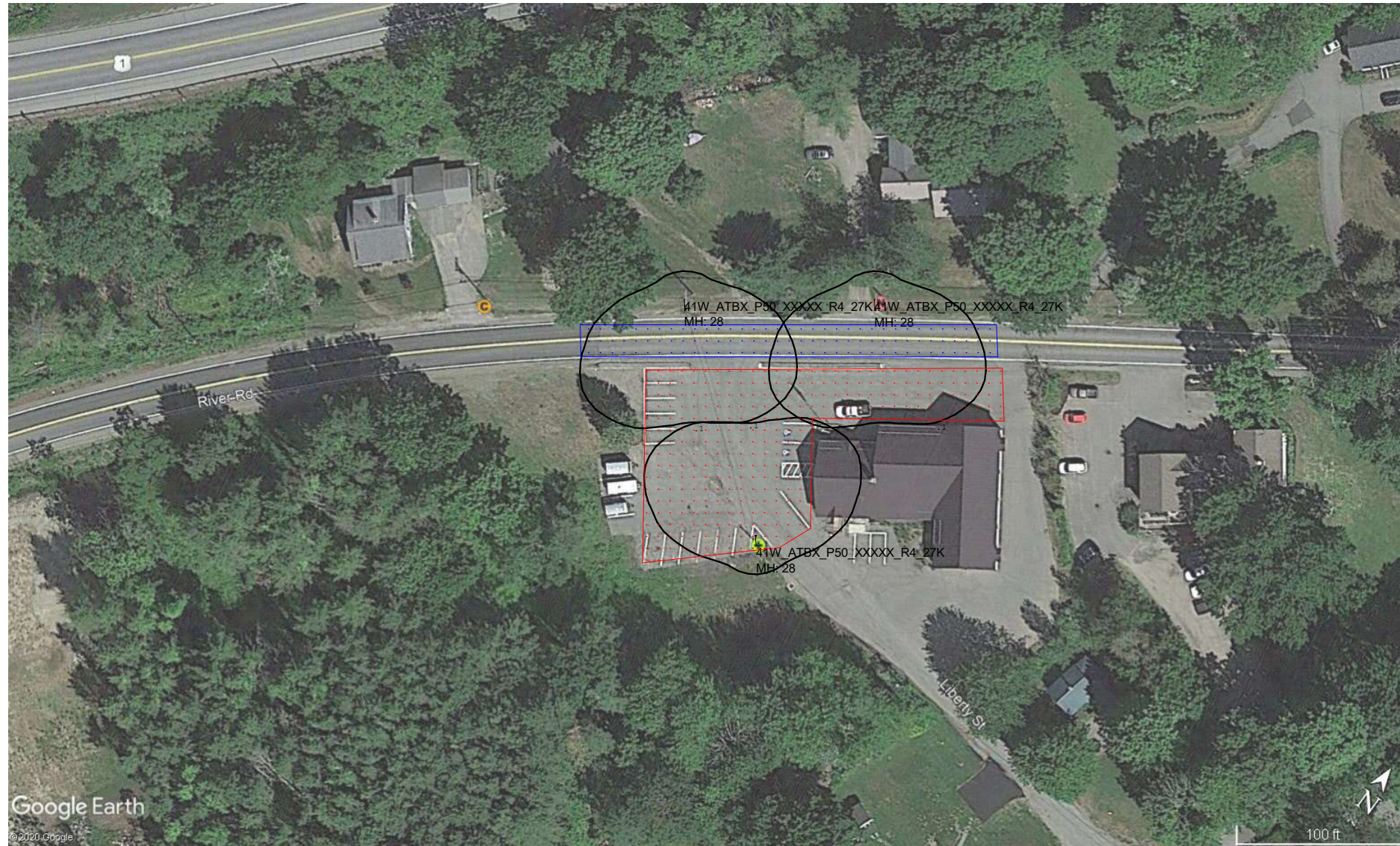


Annapolis | Montreal  
 1 (866) 422-5200  
 realtermenergy.com  
 info@realtermenergy.com  
 A division of Realterm Global

**Photometric Model:**  
 Roadway/Design 03 - Main St and Pump St.AGI  
 Designed by: Ali Faghih



# Design 04 - River Rd.AGI



RP-8-18 Recommendations:  
 Collector Low R3  
 Luminance: 0.4 cd/m2  
 Lavg/min: 4  
 Lmax/min: 8  
 Veiling LVmax/Lavg: 0.4  
 Illuminance  $\geq$  0.6 fc / 6 lux

-----  
 Parking lots RP-20-14 Recommendations:  
 LZ1 R2 - Pre-curfew  
 Minimum Horizontal Illuminance: 0.5 fc / 5 lux  
 Minimum Vertical Illuminance: 0.5 fc / 5 lux

Luminaire Schedule											
Symbol	Qty	Label	Arrangement	LLF	Arm	Lum. Watts	Lum. Lumens	[MANUFAC]	IES Class	BUG Rating	LER
—	3	41W_ATBX_P50_XXXXX_R4_27K	SINGLE	0.850	6	41	4479	American Electr	Type IV	B1-U0-G2	109

Calculation Summary												
Label	CalcType	Units	Avg	Max	Min	Avg/Min	Max/Min	Grid Z	Meter Tilt	Roadway Standard	LVRatio	RTable
Parking	Illuminance	Fc	0.30	1.20	0.04	7.50	30.00	0	N.A	N.A.	N.A.	N.A.
Road	Illuminance	Fc	0.44	1.0	0.1	4.40	10.00	0	N.A	N.A.	N.A.	N.A.

DISCLAIMER: Calculations have been performed according to IESNA & CIE standards and good practice. Some differences between measured values and calculated results may occur due to tolerances in calculation methods, testing procedures, component performance, measurement techniques and field conditions such as voltage and temperature variations. Input data used to generate the attached calculations such as road dimensions, mounting height, roadway surface and ambient lights significantly affect the lighting calculations. If the real environment conditions do not match the input data, differences will occur between measured values and calculated values. This document is property of RealTerm Energy. This document should not be used by others for construction purposes.



Annapolis | Montreal  
 1 (866) 422-5200  
 realtermenergy.com  
 info@realtermenergy.com

A division of Realterm Global

**Photometric Model:**

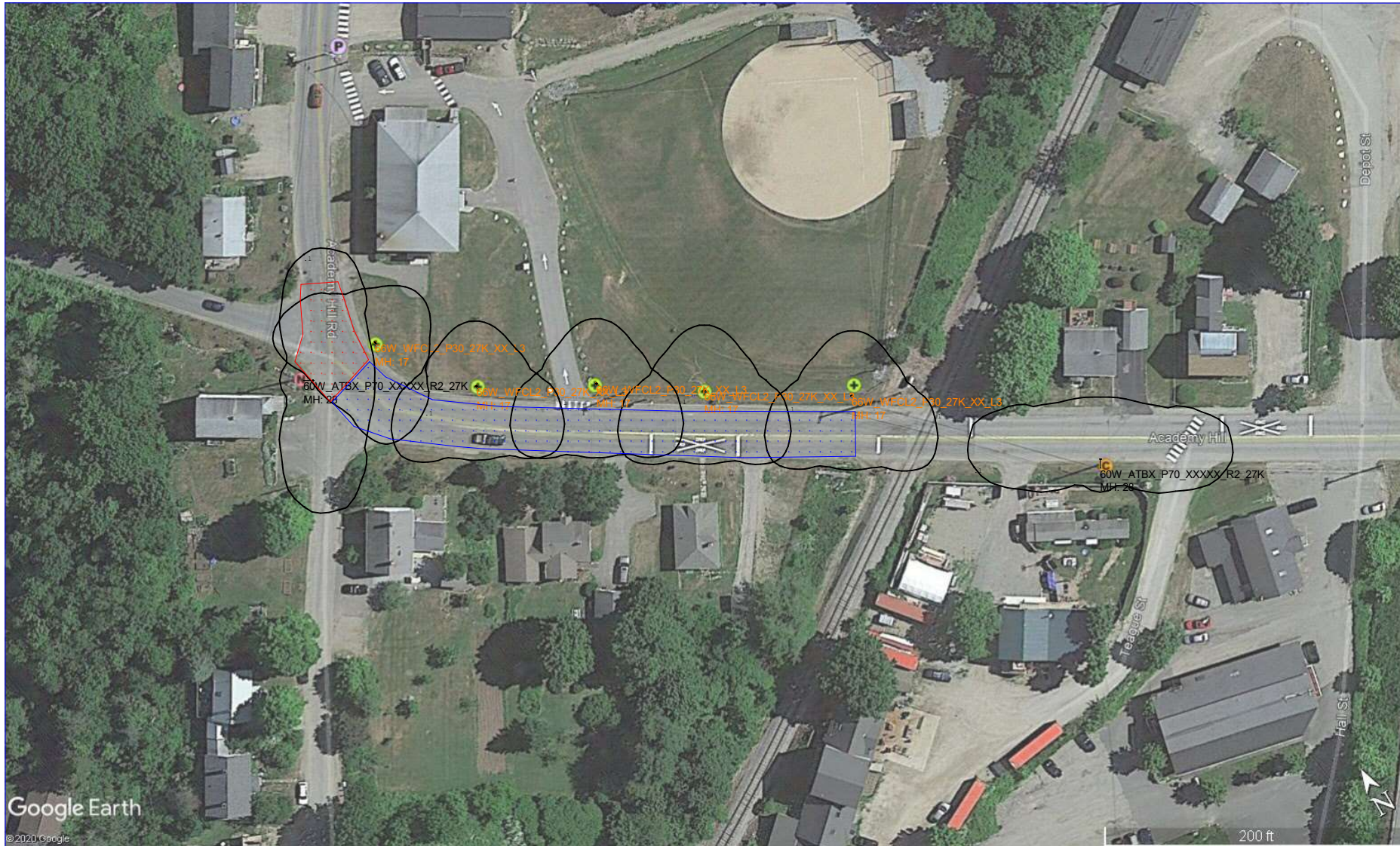
Roadway Design 04 - River Rd.AGI

Designed by: Ali Faghieh



Date : 2020-08-18  
 AGi32® Version 19.15.0

# Design 05 - Academy Hill Rd.AGI



RP-8-18 Recommendations:  
 Major Low R3  
 Luminance: 0.6 cd/m2  
 Lavg/min: 3.5  
 Lmax/min: 6  
 Veiling: 0.3  
 Illuminance >= 0.9 fc / 9 lux

-----  
 Intersection RP-8-18 Recommendations:  
 Major / Local Low R3  
 Illuminance: 1.3 fc / 13 lux  
 Eavg/min: 3

Luminaire Schedule											
Symbol	Qty	Label	Arrangement	LLF	Arm	Lum. Watts	Lum. Lumens	[MANUFAC]	IES Class	BUG Rating	LER
—	2	60W_ATBX_P70_XXXXX_R2_27K	SINGLE	0.850	6	60	5942	American Electr	Type II	B2-U0-G2	99
+	5	66W_WFCL2_P30_27K_XX_L3	SINGLE	0.850	0	66	5353	Holophane	Type IV	B2-U0-G1	81

Calculation Summary												
Label	CalcType	Units	Avg	Max	Min	Avg/Min	Max/Min	Grid Z	Meter Tilt	Roadway Standard	LVRatio	RTable
Intersection	Illuminance	Fc	1.35	2.43	0.33	4.09	7.36	0	N.A	N.A.	N.A.	N.A.
Road	Illuminance	Fc	0.55	1.5	0.2	2.75	7.50	0	N.A	N.A.	N.A.	N.A.

DISCLAIMER: Calculations have been performed according to IESNA & CIE standards and good practice. Some differences between measured values and calculated results may occur due to tolerances in calculation methods, testing procedures, component performance, measurement techniques and field conditions such as voltage and temperature variations. Input data used to generate the attached calculations such as road dimensions, mounting height, roadway surface and ambient lights significantly affect the lighting calculations. If the real environment conditions do not match the input data, differences will occur between measured values and calculated values. This document is property of RealTerm Energy. This document should not be used by others for construction purposes.



Annapolis | Montreal  
 1 (866) 422-5200  
 realtermenergy.com  
 info@realtermenergy.com

A division of Realterm Global

**Photometric Model:**

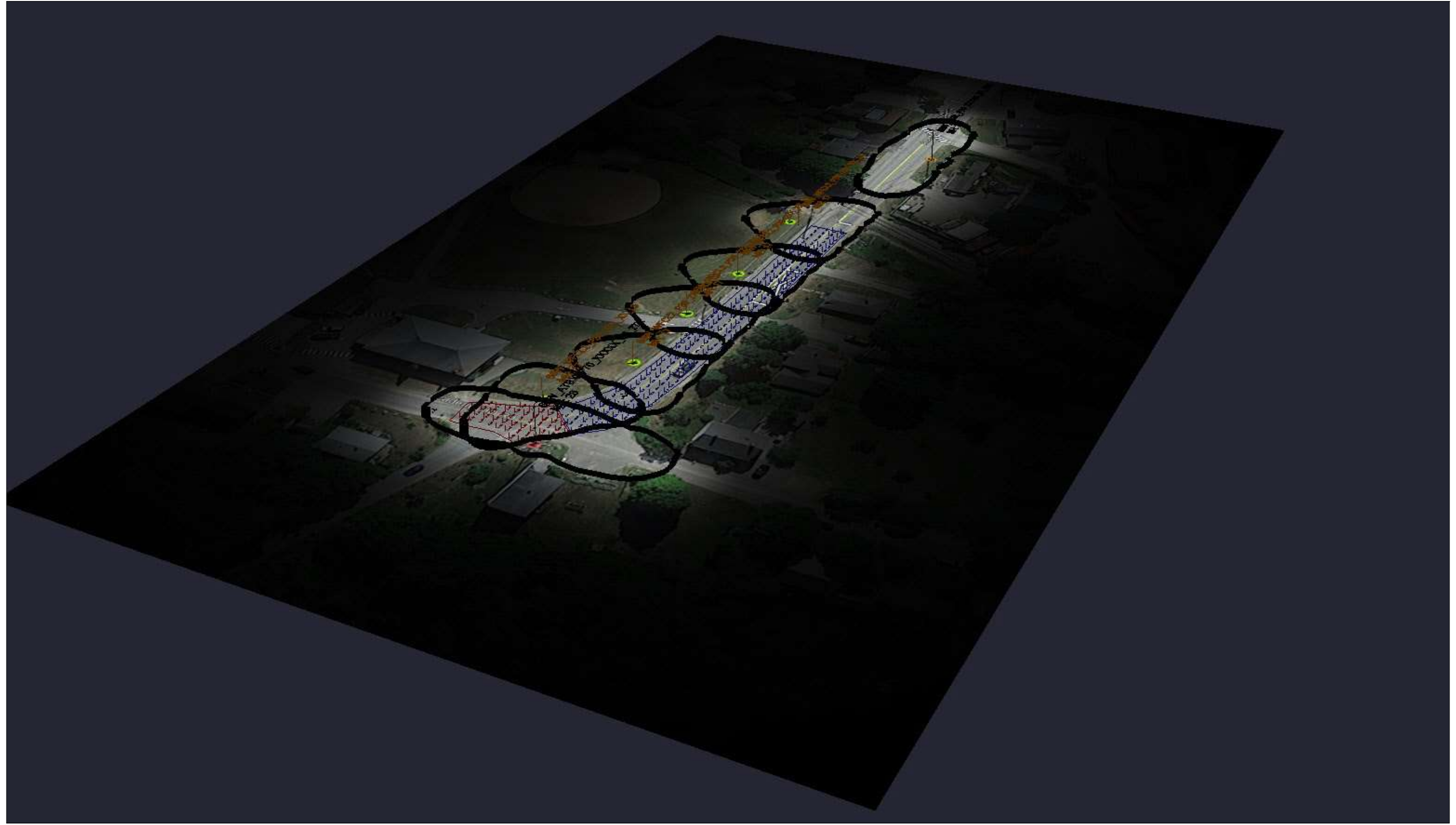
Roadway/Design 05 - Academy Hill Rd.AGI

Designed by: Ali Faghih



Date : 2020-08-27  
 AGi32® Version 19.15.0

# Design 05 - Academy Hill Rd.AGI



DISCLAIMER: Calculations have been performed according to IESNA & CIE standards and good practice. Some differences between measured values and calculated results may occur due to tolerances in calculation methods, testing procedures, component performance, measurement techniques and field conditions such as voltage and temperature variations. Input data used to generate the attached calculations such as road dimensions, mounting height, roadway surface and ambient lights significantly affect the lighting calculations. If the real environment conditions do not match the input data, differences will occur between measured values and calculated values. This document is property of RealTerm Energy. This document should not be used by others for construction purposes.



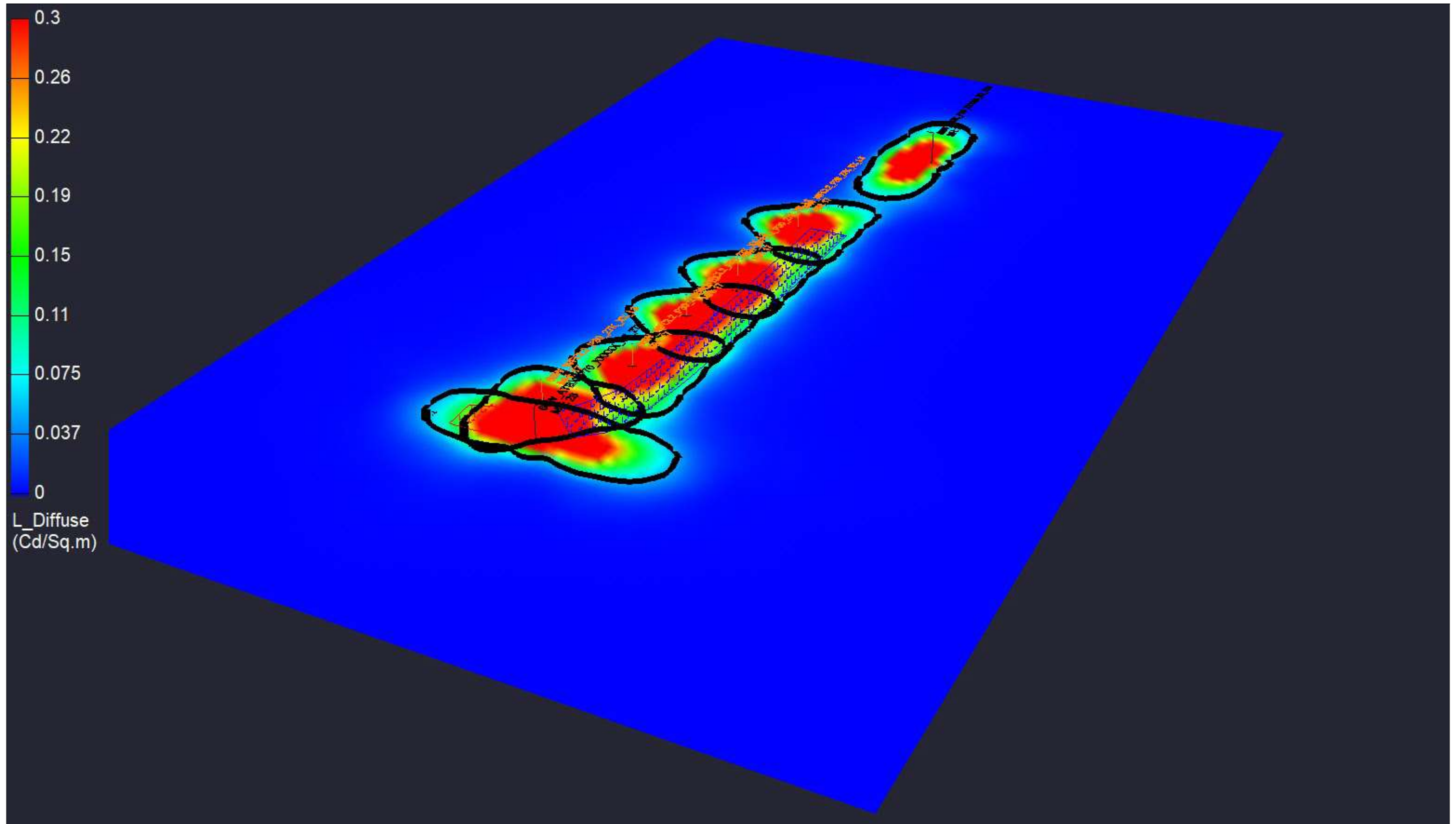
Annapolis | Montreal  
1 (866) 422-5200  
realtermenergy.com  
info@realtermenergy.com  
A division of Realterm Global

**Photometric Model:**  
Roadway:Design 05 - Academy Hill Rd.AGI  
Designed by: Ali Faghih



Date : 2020-08-27  
AGi32® Version 19.15.0  
**Page 2 of 3**

# Design 05 - Academy Hill Rd.AGI



DISCLAIMER: Calculations have been performed according to IESNA & CIE standards and good practice. Some differences between measured values and calculated results may occur due to tolerances in calculation methods, testing procedures, component performance, measurement techniques and field conditions such as voltage and temperature variations. Input data used to generate the attached calculations such as road dimensions, mounting height, roadway surface and ambient lights significantly affect the lighting calculations. If the real environment conditions do not match the input data, differences will occur between measured values and calculated values. This document is property of RealTerm Energy. This document should not be used by others for construction purposes.



**REALTERM**  
ENERGY

Annapolis | Montreal  
1 (866) 422-5200  
realtermenergy.com  
info@realtermenergy.com

A division of Realterm Global

**Photometric Model:**

Roadway:Design 05 - Academy Hill Rd.AGI

Designed by: Ali Faghieh



Date : 2020-08-27

AGi32® Version 19.15.0



# Design 06 - Cross St and Glidden St.AGI



Intersection RP-8-18 Recommendations:  
 Local / Local Low R3  
 Illuminance: 0.8 fc / 8 lux  
 Eavg/min: 6

Luminaire Schedule											
Symbol	Qty	Label	Arrangement	LLF	Arm	Lum. Watts	Lum. Lumens	[MANUFAC]	IES Class	BUG Rating	LER
—	1	28W_ATBX_P40_XXXXX_R2_27K	SINGLE	0.850	6	28	3108	American Electr	Type II	B1-U0-G1	111

Calculation Summary												
Label	CalcType	Units	Avg	Max	Min	Avg/Min	Max/Min	Grid Z	Meter Tilt	Roadway Standard	LVRatio	RTable
Intersection	Illuminance	Fc	0.52	0.99	0.19	2.74	5.21	0	N.A	N.A.	N.A.	N.A.

DISCLAIMER: Calculations have been performed according to IESNA & CIE standards and good practice. Some differences between measured values and calculated results may occur due to tolerances in calculation methods, testing procedures, component performance, measurement techniques and field conditions such as voltage and temperature variations. Input data used to generate the attached calculations such as road dimensions, mounting height, roadway surface and ambient lights significantly affect the lighting calculations. If the real environment conditions do not match the input data, differences will occur between measured values and calculated values. This document is property of RealTerm Energy. This document should not be used by others for construction purposes.



Annapolis | Montreal  
 1 (866) 422-5200  
[realtermenergy.com](http://realtermenergy.com)  
[info@realtermenergy.com](mailto:info@realtermenergy.com)

A division of Realterm Global

**Photometric Model:**

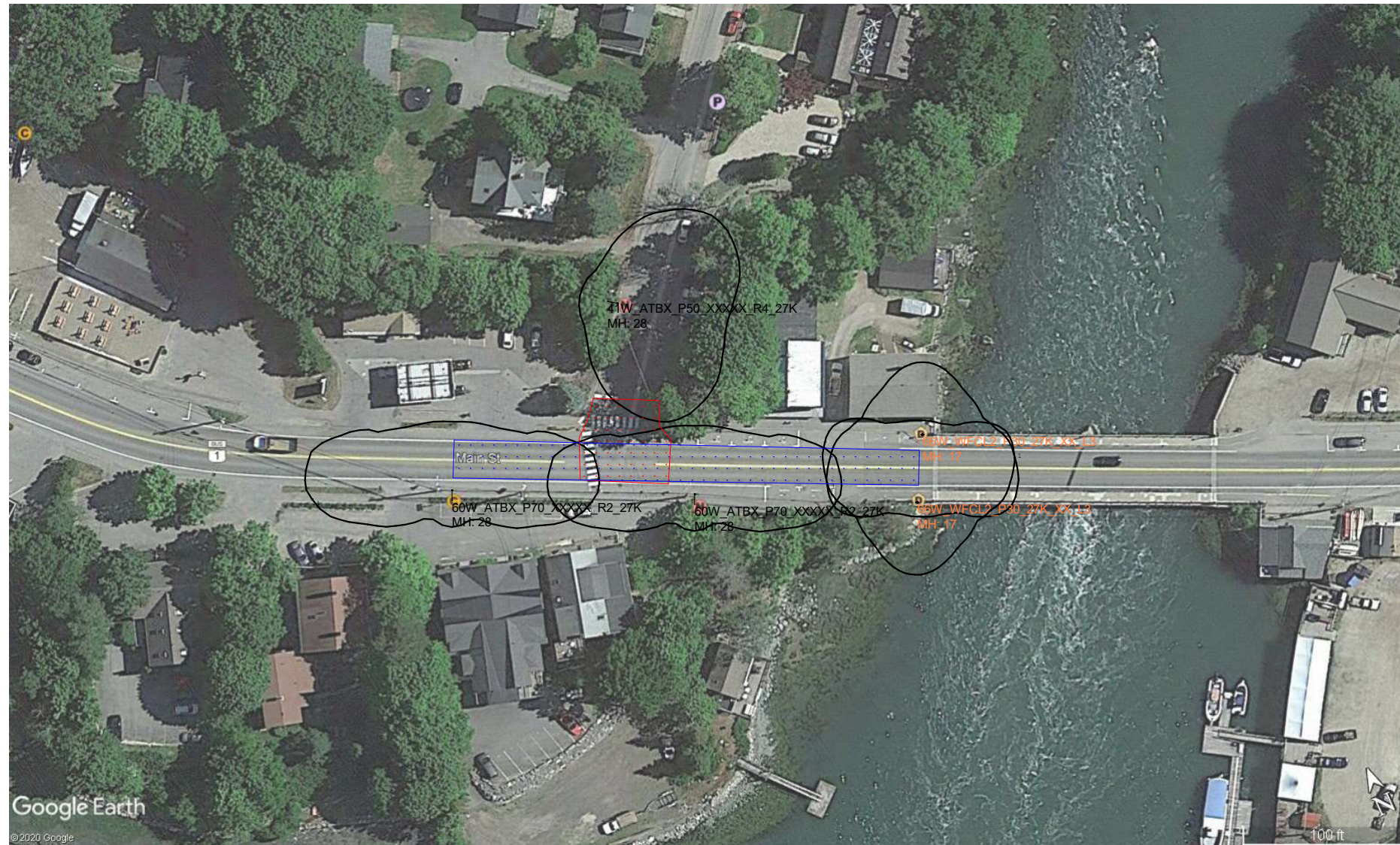
Roadway/Design 06 - Cross St and Glidden St.AGI

Designed by: Ali Faghieh



Date : 2020-08-06  
 AGi32® Version 19.15.0

# Design 07 - Main St and Glidden St.AGI



Intersection RP-8-18 Recommendations:  
 Major / Local Low R3  
 Illuminance: 1.3 fc / 13 lux  
 Eavg/min: 3

RP-8-18 Recommendations:  
 Major Low R3  
 Luminance: 0.6 cd/m2  
 Lavg/min: 3.5  
 Lmax/min: 6  
 Veiling: 0.3  
 Illuminance >= 0.9 fc / 9 lux

Luminaire Schedule											
Symbol	Qty	Label	Arrangement	LLF	Arm	Lum. Watts	Lum. Lumens	[MANUFAC]	IES Class	BUG Rating	LER
—	2	60W_ATBX_P70_XXXXX_R2_27K	SINGLE	0.850	6	60	5942	American Electr	Type II	B2-U0-G2	99
—	1	41W_ATBX_P50_XXXXX_R4_27K	SINGLE	0.850	6	41	4479	American Electr	Type IV	B1-U0-G2	109
+	2	66W_WFCL2_P30_27K_XX_L3	SINGLE	0.850	0	66	5353	Holophane	Type IV	B2-U0-G1	81

Calculation Summary												
Label	CalcType	Units	Avg	Max	Min	Avg/Min	Max/Min	Grid Z	Meter Tilt	Roadway Standard	LVRatio	RTable
Intersection	Illuminance	Fc	0.39	1.34	0.10	3.90	13.40	0	N.A	N.A.	N.A.	N.A.
Road	Illuminance	Fc	0.78	2.5	0.2	3.90	12.50	0	N.A	N.A.	N.A.	N.A.

DISCLAIMER: Calculations have been performed according to IESNA & CIE standards and good practice. Some differences between measured values and calculated results may occur due to tolerances in calculation methods, testing procedures, component performance, measurement techniques and field conditions such as voltage and temperature variations. Input data used to generate the attached calculations such as road dimensions, mounting height, roadway surface and ambient lights significantly affect the lighting calculations. If the real environment conditions do not match the input data, differences will occur between measured values and calculated values. This document is property of RealTerm Energy. This document should not be used by others for construction purposes.



Annapolis | Montreal  
 1 (866) 422-5200  
 realtermenergy.com  
 info@realtermenergy.com

A division of Realterm Global

**Photometric Model:**

Roadway/Design 07 - Main St and Glidden St.AGI

Designed by: Ali Faghih



Date : 2020-08-27  
 AGI32® Version 19.15.0

# Design 08 - Glidden St.AGI



RP-8-18 Recommendations:  
 Local Low R3  
 Luminance: 0.3 cd/m2  
 Lavg/min: 6  
 Lmax/min: 10  
 Veiling: 0.4  
 Illuminance >= 0.42 fc / 4.5 lux

Luminaire Schedule											
Symbol	Qty	Label	Arrangement	LLF	Arm	Lum. Watts	Lum. Lumens	[MANUFAC]	IES Class	BUG Rating	LER
—	3	28W_ATBX_P40_XXXXX_R2_27K	SINGLE	0.850	6	28	3108	American Electr	Type II	B1-U0-G1	111

Calculation Summary													
Label	CalcType	Units	Avg	Max	Min	Avg/Min	Max/Min	Grid Z	Meter Tilt	Roadway Standard	LVRatio	RTable	
Road	Illuminance	Fc	0.19	1.2	0.0	N.A.	N.A.	0	N.A	N.A.	N.A.	N.A.	

DISCLAIMER: Calculations have been performed according to IESNA & CIE standards and good practice. Some differences between measured values and calculated results may occur due to tolerances in calculation methods, testing procedures, component performance, measurement techniques and field conditions such as voltage and temperature variations. Input data used to generate the attached calculations such as road dimensions, mounting height, roadway surface and ambient lights significantly affect the lighting calculations. If the real environment conditions do not match the input data, differences will occur between measured values and calculated values. This document is property of RealTerm Energy. This document should not be used by others for construction purposes.



Annapolis | Montreal  
 1 (866) 422-5200  
 realtermenergy.com  
 info@realtermenergy.com

A division of Realterm Global

**Photometric Model:**

Roadway Design 08 - Glidden St.AGI

Designed by: Ali Faghieh



Date : 2020-08-17  
 AGi32® Version 19.15.0



# QUOTATION

RealTerm Energy US, L.P.  
201 West Street, Suite 200  
Annapolis, MD, 21401

Reference #:	O-2060
Date:	September 18, 2020
RTE Contract #:	00001828
Project Manager:	Fredella Weil

**Customer:**

Town of Newcastle  
Jonathan Duke  
4 Pump Street  
Newcastle ME, 04553

Item #	Description	Quantity	Unit Price	Total
	Design, Supply and Install of LED luminaires listed below (RTE_ID: 71-74 and RTE ID: 92-94)			
1	<b>Material</b>			
2	ALUMINUM POLE, 17", BASE, 11' - (NYA11FTJ17P07LABBK)	8	\$ 984.00	\$7,872.00
3	Decorative Luminaire - 66W_WFCL2 P30 27K AS BK L3 N P7E NL1X1	8	\$ 1,038.00	\$8,304.00
4	ANCHOR BOLTS, NUTS	32	\$ 15.00	\$480.00
5	UBC-20-0-01-NA-01-2-GY	8	\$ 74.80	\$598.40
6	1YR-HW-UBIVU	8	\$ 1.50	\$12.00
7	1YR-HW-CONNECTIVITY	8	\$ 2.00	\$16.00
8	5YR EXTENDED WARRANTY	8	\$ 5.00	\$40.00
9	Smart Controls Freight Estimate	1	\$ 50.00	\$50.00
10	<b>Installation</b>			
11	New Decorative - equipment and labor: to install one (1) new LED Luminaire complete with Photocell/Control node. LED luminaire and Photocell/Control node provided by RTE	8	\$ 59.00	\$472.00
12	Supply and Install: a new fuse (FNM-10) and fuse holder (Thomas & Betts 65U break-away connector kit).	8	\$ 37.00	\$296.00
13	To run wire from the meter box to each light through the conduit (Unit in ft., quantity estimated).	400	\$ 3.65	\$1,460.00
14	Price to install new Town-owned pole and run wire through poles to the new LED lights	8	\$ 395.00	\$3,160.00
15	Storage, Fixture Receiving and Inventory Control.	8	\$ 3.25	\$26.00
16	Installation Contingency	1	5.00%	\$270.70
17	<b>RTE Fees</b>			
18	Smart Controls Commissioning / RTE Project Management	8	\$ 15.00	\$120.00
19	Task 7-10: Installation Project Management	8	\$ 18.30	\$146.40
20	RTE Margin on Material & Installation	1	8.00%	\$2,004.97
21	Hourly Rate - Project Management	16	\$ 75.00	\$1,200.00
22	Hourly Rate - Designer	20	\$ 95.00	\$1,900.00
23	Hourly Rate - Field Installation Specialist	8	\$ 95.00	\$760.00
<b>Notes or Special Instructions:</b>			<b>Total:</b>	<b>\$29,188.47</b>

By signing this Quotation, you are authorizing RealTerm Energy to proceed with the items on this Quotation.

**Notes:**

- Freight charges to be billed under actual invoices.
- RTE Fees for Task 1-6 were included in the IGA for the main project.
- LED Luminaires and poles have a 5-7 week lead time.
- Pricing is valid for forty-five (45) days from date of quotation unless otherwise stated.
- Item # 13 to be billed on actual distance from meter box to each light. Flagging service fee extra, if required, at \$90.00/light
- Pole base and foundations to be provided by the Town.
- The total price does not include any applicable taxes.
- Any possible additional fees associated with the utility approving the new light location or any relocations are not included. Connection fees, if applicable, will be paid directly by the Town to the utility.
- Refer to Appendix A for product specification sheets and appendix B for completed photometric designs.
- Alternative color smart controls can be provided upon Town request (black/grey). Please refer to Appendix C for sample pictures.

Customer Signature

Date

RTE Authorized Signature

Date

Catalog Number	
Notes	Type

## WFCL2

Utility Washington Series Luminaire  
Full Cutoff LED2



### Mechanical

- Heavy grade A360 cast aluminum (<1% copper)
- Tool-less access with a spring-loaded latch
- Hidden hinge door allowing the door to swing open and remain open
- Optional internal or external NEMA twist lock photocontrol receptacle. Housing contains a tempered glass window to allow light to reach the cell for internal versions.
- Mount to slip-fitter that will accept 3" high by 2-7/8" to 3-1/8" O.D. pole tenon
- Decorative top cover contains stainless steel hinge which secures entry the LED optical chamber
- Polyester power coat paint to ensure maximum durability
- Finish meets 5,000-hour salt spray testing
- Holophane and RAL Classic finishes.

### Electrical

- All surge protection meets ANSI/IEEE C62.41.2 10kV/10kA.
- Standard SPD meets 10kV/5kA per ANSI C136.2-2015.
- 20KV Option meets 20kV/10kA per ANSI C136.2-2015.
- Quick disconnect connectors for ease of installation and maintenance.
- Three pole terminal block is standard, with optional prewired leads for ease of installation
- LLED drivers meet maximum total harmonic distortion (THD) of 20%, >0.90 Power Factor and are ROHS compliant. Minimum operating temperature is -40C. Electronic driver has an estimated minimum life of 100,000 hours at 25°C.

### Optical

- IP65 rated optical compartment
- LED circuit board located in the top cover
- Asymmetric or Symmetric full cutoff distributions
- 2700K, 3000K, 4000K, and 5000K CCT
- 70CRI Standard

### Control Options

- Field Adjustable Output (AO) module - Onboard device that adjusts the light output and input wattage to meet site specific requirements. The AO module is preset at the factory to position number 8 (see chart).
- Wireless remote control for monitoring performance and/or maintenance of the system – ROAM
- Factory Programmed Driver (FPDxx) - Customize lumen output prior to manufacturing and still enables control leads so other options can also be used
- Long Life Photocontrols (PCLL) - 20 Year Life
- 3 and 7 pin photocontrol receptacles internally (P3, P7) or externally (P3E, P7E) mounted
- Part-night dimming (PND) enables luminaire to monitor and adjust 50% lumens based on season and geographic location, 8-day rolling average

### Testing/Compliance

- UL 1598 - Wet Locations Safety Listing
- Suitable for ambient temperatures -40°C to 40°C
- DesignLights Consortium® (DLC) qualified product. Not all versions of this product may be DLC qualified. Please check with the DLC Qualified Products List at [www.designlights.org/QPL](http://www.designlights.org/QPL) for updated list

### Manufacturing

- Manufactured in Crawfordsville, Indiana, ARRA compliant
- 100% electrical testing on all luminaires before shipment
- Ten (10) years minimum experience in manufacturing LED based products

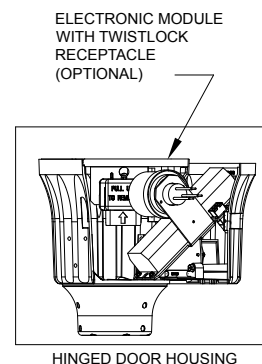
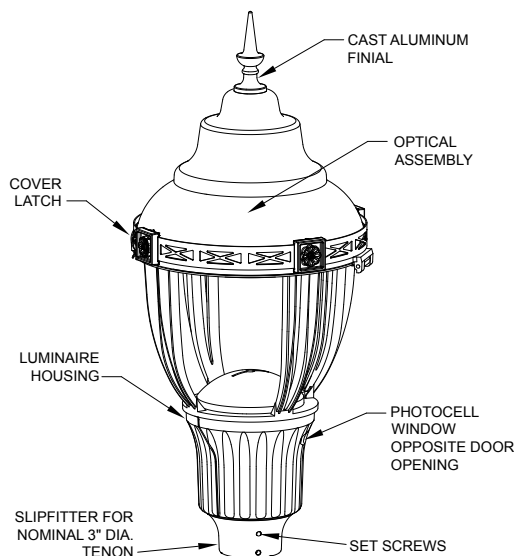
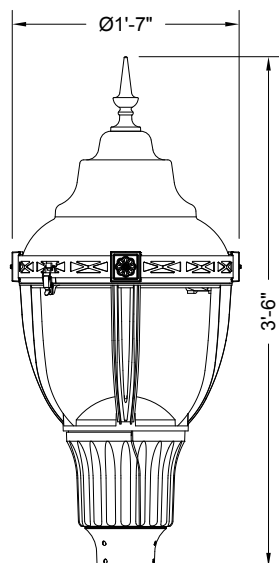
### Warranty

5-year limited warranty. Complete warranty terms located at: [www.acuitybrands.com/CustomerResources/Terms\\_and\\_Conditions.aspx](http://www.acuitybrands.com/CustomerResources/Terms_and_Conditions.aspx).

**Note:** Actual performance may differ as a result of end-user environment and application. All values are design or typical values, measured under laboratory conditions at 25°C. Specifications subject to change without notice.



## DIMENSIONAL DATA



Maximum Weight - 57 lbs  
Maximum Effective Projected Area - 1.72 sq. ft.

**ORDERING INFORMATION**

**Example:** WFCL2 P20 30K AS GN L2 N P73

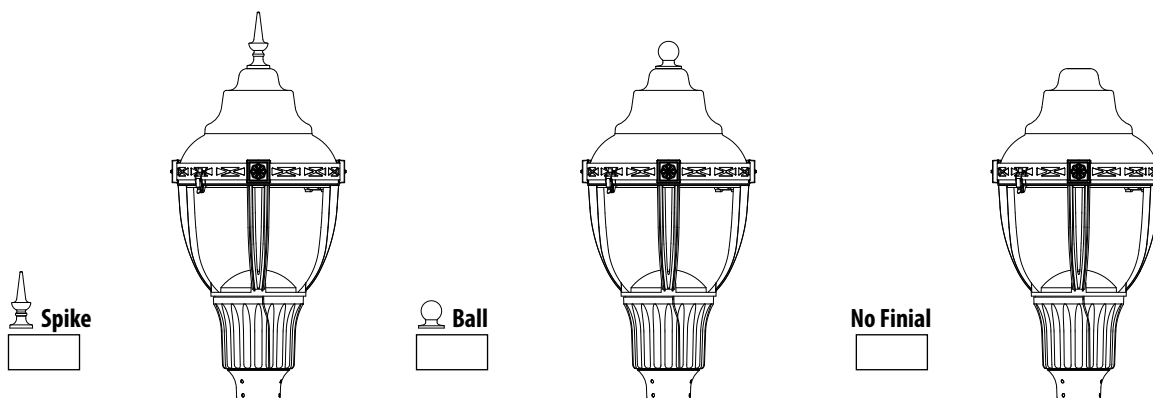
Series	Led performance package	LED Color temperature	Voltage	Housing color	Optics	Finial
WFCL2 Utility Washington LED FCO	P10	1,500 nominal lumens (amber only)	AM True amber 27K 2700K CCT	AS Auto-sensing voltage (120 thru 277) 50/60 HZ	L2 Type 2 distribution full cutoff L3 Type 3 distribution full cutoff L4 Type 4 distribution full cutoff L5 Type 5 distribution full cutoff	N None B Ball S Spike
	P20	4,500 nominal lumens	30K 3000K CCT			
	P30	6,500 nominal lumens	40K 4000K CCT			
	P40	8,500 nominal lumens	50K 5000K CCT			
	P50	11,500 nominal lumens				
				BK Black GR Gray GH Graphite GN Green PP Prime paint WH White BZ Bronze TDC RAL Color color (RAL**) CMC Custom color match		

Options: Option Compatibility Matrix on page 3 of 4		
A0	Field Adjustable Output	P3E NEMA Twist Lock Dimming Photocontrol Receptacle - 3 PIN. Externally mounted
DE	ROAM Hardware DecoNode and DCM Factory Installed	P7E NEMA Twist Lock Dimming Photocontrol Receptacle - 7 PIN. Externally mounted
FPDxx	Factory Programmed Driver	RME ROAM Node (External)
P3	NEMA Twist Lock photocontrol receptacle - 3 PIN receptacle only.	RME3 347V ROAM NODE (External)
P7	NEMA Twist Lock Dimming photocontrol receptacle - 7 PIN receptacle only.	RME4 480V ROAM NODE (External)
PCS	DTL twistoff photocontrol for solid-state lighting 120-277V	PSC Shorting cap
PCLL	DTL long life twistlock photocontrol for solid-state AS	HSS House side shield
P34	DTL long life twistlock photocontrol for solid-state 347V	
P48	DTL long life twistlock photocontrol for solid-state 480V	
PND	Part night dimming - down to 50%	
L1H	1.5 ft prewired leads	
L03	3ft prewired leads	
L10	10 ft prewired leads	
L20	20 ft prewired leads	
L25	25 ft prewired leads	
L30	30 ft prewired leads	
NL1X1	NEMA Label 1" X 1"	
NL2X2	NEMA Label 2" X 2"	
20KV	20kV/10kA surge protection	

Accessories: Order as separate catalog number.	
XXCL2HSS1	Field Accessory - Louvered house side shield (Qty 1)
XXCL2HSSJ50	Field Accessory - Louvered house side shield (Bulk Qty 50)
XXCL2SPD10KAS	10kV/5kA Extreme surge 120-277V
XXCL2SPD10KAH	10kV/5kA Extreme surge 480V
XXCL2SPD20KAS	20kV/10kA Extreme surge 120-277VV
XXCL2SPD20KAH	20kV/10kA Extreme surge 480V

**FINIAL INFORMATION**

Mark Appropriate Box for Finial Options



**OPTIONS MATRIX**

Mounting		SELECTED OPTION (start here)																
		AO	DE	FPDxx	P3	P3E	P7	P7E	P34	P48	PCLL	PCS	PND	PSC	RME	RME3	RME4	20kV
LED Performance Package	P10	Y	Y	Y	Y	Y	Y	Y	Y	Y	Y	Y	Y	Y	Y	Y	Y	Y
	P20	Y	Y	Y	Y	Y	Y	Y	Y	Y	Y	Y	Y	Y	Y	Y	Y	Y
	P30	Y	Y	Y	Y	Y	Y	Y	Y	Y	Y	Y	Y	Y	Y	Y	Y	Y
	P40	Y	Y	Y	Y	Y	Y	Y	Y	Y	Y	Y	Y	Y	Y	Y	Y	Y
	P50	Y	N	Y	Y	Y	Y	Y	Y	Y	Y	Y	N	Y	Y	Y	Y	N
Voltage	AS	Y	Y	Y	Y	Y	Y	Y	N	N	Y	Y	Y	Y	Y	N	N	Y
	AH	Y	N	Y	Y	Y	Y	Y	Y	Y	Y	N	N	Y	N	Y	Y	Y
Finial	B	Y	Y	Y	Y	N	Y	N	Y	Y	Y	Y	Y	Y	N	N	N	Y
	S	Y	Y	Y	Y	N	Y	N	Y	Y	Y	Y	Y	Y	N	N	N	Y
	N	Y	Y	Y	Y	M	Y	M	Y	Y	Y	Y	Y	Y	M	M	M	Y
Compatible Options	AO		N	Y	Y	Y	N	N	Y	Y	Y	Y	N	Y	N	N	N	Y
	DE	N		Y	Y	N	N	N	N	N	N	N	N	Y	N	N	N	Y
	FPDxx	Y	Y		Y	Y	Y	Y	Y	Y	Y	Y	Y	Y	Y	Y	Y	Y
	P3	Y	M	Y	Y	N	N	N	Y	Y	Y	Y	M	Y	N	N	N	Y
	P3E	Y	N	Y	N		N	N	Y	Y	Y	Y	N	Y	N	N	N	Y
	P7	N	N	Y	N	N		N	Y	Y	Y	Y	N	Y	N	N	N	Y
	P7E	N	N	Y	N	N	N		Y	Y	Y	Y	N	Y	I	I	I	Y
	P34	Y	N	Y	Y	Y	Y	Y		N	N	N	N	N	N	N	N	Y
	P48	Y	N	Y	Y	Y	Y	Y	N		N	N	N	N	N	N	N	Y
	PCLL	Y	N	Y	Y	Y	Y	Y	N	N		N	M	N	N	N	N	Y
	PCS	Y	N	Y	Y	Y	Y	Y	N	N	N		M	N	N	N	N	Y
	PND	N	N	Y	Y	N	N	N	N	N	M	M		Y	N	N	N	Y
	PSC	Y	N	Y	Y	Y	Y	Y	N	N	N	N	Y		N	N	N	Y
	RME	N	N	Y	N	N	N	Y	N	N	N	N	N	N		N	N	Y
	RME3	N	N	Y	N	N	N	Y	N	N	N	N	N	N	N		N	Y
	RME4	N	N	Y	N	N	N	Y	N	N	N	N	N	N	N	N		Y
	20kV	Y	Y	Y	Y	Y	Y	Y	Y	Y	Y	Y	Y	Y	Y	Y	Y	

Y = Valid Option Combination

M = Must have: one of these must be installed for the luminaire to operate

N = Combination Not available

**ROAM OPTION DETAILS**

**DE** = UL listed components without GPS capability, external antenna is black and includes ROAM capable node only, ROAM service package sold separately via Acuity Controls

**RME** = UL listed device without GPS capability, blue housing color, includes ROAM capable node only, ROAM service package sold separately via Acuity Controls and contact Acuity Controls for RME device with GPS capability or non-standard color

**RME3** = UL listed device without GPS capability, green housing color, includes ROAM capable node only, ROAM service package sold separately via Acuity Controls and contact Acuity Controls for RME device with GPS capability or non-standard color

**RME4** = UL listed device without GPS capability, yellow housing color, includes ROAM capable node only, ROAM service package sold separately via Acuity Controls and contact Acuity Controls for RME device with GPS capability or non-standard color

**LUMEN AMBIENT TEMPERATURE (LAT) MULTIPLIERS**

Use the factors to determine relative lumen output for average ambient temperatures from 0-40C (32-104F)

Ambient Temp (degrees C) Lumen Multiplier								
0	5	10	15	20	25	30	35	40
1.05	1.04	1.03	1.02	1.01	1.00	0.99	0.98	0.97

**PROJECTED LED LUMEN MAINTENANCE**

Data references the extrapolated performance projections for the platforms noted in 25C ambient, based on 6,000 hours of IED testing (tested per IESNA LM-80-08 and projected per IESNA TM-21-11). To calculate LLF, use the lumen maintenance factor that corresponds to the desired number of operating hours below. For other lumen maintenance values, contact factory.

Package	Lumen Maintenance						L70 Hrs
	25k hrs	36k hrs	50k hrs	60k hrs	75k hrs	100k hrs	
P20-P40	0.97	0.96	0.95	0.94	0.93	0.91	383,000
P50	0.96	0.94	0.93	0.91	0.90	0.87	267,667

PERFORMANCE DATA

LED Package	Distribution	System Watts	2700K		3000K		4000K		5000K	
			Lumens	LPW	Lumens	LPW	Lumens	LPW	Lumens	LPW
P20	L2	45	4174	93	4265	95	4701	104	4853	108
	L3	45	3756	83	3838	85	4230	94	4357	97
	L4	45	3968	88	4054	90	4468	99	4603	102
	L5	45	4120	92	4210	94	4640	103	4780	106
P30	L2	66	5952	90	6082	92	6703	102	6905	105
	L3	66	5355	81	5472	83	6031	91	6213	94
	L4	66	5657	86	5781	88	6371	97	6563	99
	L5	66	5874	89	6002	91	6615	100	6815	103
P40	L2	89	7656	86	7823	88	8622	97	8882	100
	L3	89	6888	77	7038	79	7757	87	7991	90
	L4	89	7277	82	7436	84	8195	92	8442	95
	L5	89	7667	85	7721	87	8509	96	8766	98
P50	L2	139	11058	80	11300	81	12454	90	12830	92
	L3	139	9959	72	10166	73	11205	81	11543	83
	L4	139	10511	76	10740	77	11837	85	12195	88
	L5	139	10914	79	11152	80	12291	88	12662	91

FPDXX DATA OPTIONS

FPDxx Setting	Wattage	P20 27K				P20 30K				P20 40K				P20 50K			
		L2	L3	L4	L5	L2	L3	L4	L5	L2	L3	L4	L5	L2	L3	L4	L5
Standard	45	4174	3756	3968	4120	4265	3838	4054	4210	4701	4230	4468	4640	4843	4357	4603	4780
FPD95	43	3966	3568	3769	3914	4052	3646	3852	3999	4466	4018	4245	4408	4601	4139	4373	4541
FPD90	41	3757	3380	3571	3708	3839	3454	3649	3789	4231	3807	4021	4176	4359	3921	4143	4302
FPD85	38	3548	3192	3372	3502	3626	3262	3446	3578	3996	3595	3798	3944	4117	3704	3913	4063
FPD80	36	3339	3004	3174	3296	3412	3070	3243	3368	3761	3384	3575	3712	3874	3486	3683	3824

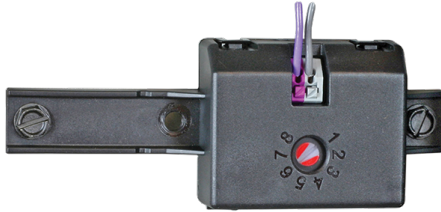
FPDxx Setting	Wattage	P30 27K				P30 30K				P30 40K				P30 50K			
		L2	L3	L4	L5	L2	L3	L4	L5	L2	L3	L4	L5	L2	L3	L4	L5
Standard	66	5952	5355	5657	5874	6082	5472	5781	6002	6703	6031	6371	6615	6905	6213	6563	6815
FPD95	63	5654	5087	5374	5580	5778	5198	5492	5702	6368	5729	6053	6285	6560	5902	6235	6474
FPD90	59	5357	4819	5092	5287	5474	4925	5203	5402	6033	5428	5734	5954	6215	5591	5907	6134
FPD85	56	5059	4552	4809	4993	5170	4651	4914	5102	5698	5126	5415	5623	5870	5281	5579	5793
FPD80	53	4762	4284	4526	4699	4865	4377	4625	4802	5362	4825	5097	5292	5524	4970	5251	5452
FPD75	50	4464	4016	4243	4406	4561	4104	4336	4502	5027	4523	4778	4962	5179	4660	4923	5111
FPD70	46	4166	3748	3960	4112	4257	3830	4046	4202	4692	4221	4460	4631	4834	4349	4594	4771

FPDxx Setting	Wattage	P40 27K				P40 30K				P40 40K				P40 50K			
		L2	L3	L4	L5	L2	L3	L4	L5	L2	L3	L4	L5	L2	L3	L4	L5
Standard	89	7656	6888	7277	7556	7823	7038	7436	7721	8622	7757	8195	8509	8882	7991	8442	8766
FPD95	85	7273	6543	6913	7178	7432	6686	7064	7335	8191	7369	7785	8084	8438	7592	8020	8328
FPD90	80	6890	6199	6549	6800	7041	6334	6692	6949	7760	6891	7375	7658	7994	7192	7598	7889
FPD85	76	6507	5855	6185	6422	6649	5982	6320	6562	7329	6593	6966	7233	7550	6792	7176	7451
FPD80	71	6125	5510	5821	6045	6258	5631	5948	6176	6897	6206	6566	6807	7106	6393	6754	7013

FPDxx Setting	Wattage	P50 27K				P50 30K				P50 40K				P50 50K			
		L2	L3	L4	L5	L2	L3	L4	L5	L2	L3	L4	L5	L2	L3	L4	L5
Standard	139	11058	9949	10511	10914	11300	10166	10740	11152	12454	11205	11837	11291	12830	11543	12195	12662
FPD95	132	10506	9452	9985	10368	10735	9658	10203	10594	11831	10644	11245	11677	12188	10966	11585	12029
FPD90	125	9953	8954	9460	9822	10170	9150	9666	10037	11209	10084	10654	11062	11547	10389	10975	11396
FPD85	118	9400	8457	8934	9277	9605	8641	9129	9479	10586	9524	10062	10447	10905	9811	10365	10763
FPD80	111	8847	7959	8409	8731	9040	8133	8592	8922	9963	8964	9470	9833	10264	9234	9756	10130



## COMPONENTS & OPTIONS DATA



**AO**  
Manual field adjustable output dimming device



**RME (External)**  
Remote Asset Management Control Dimming Device  
*(specify with receptacle)*



**DE**  
Remote Asset Management Control Decorative Node  
*(specify with P3 receptacle)*

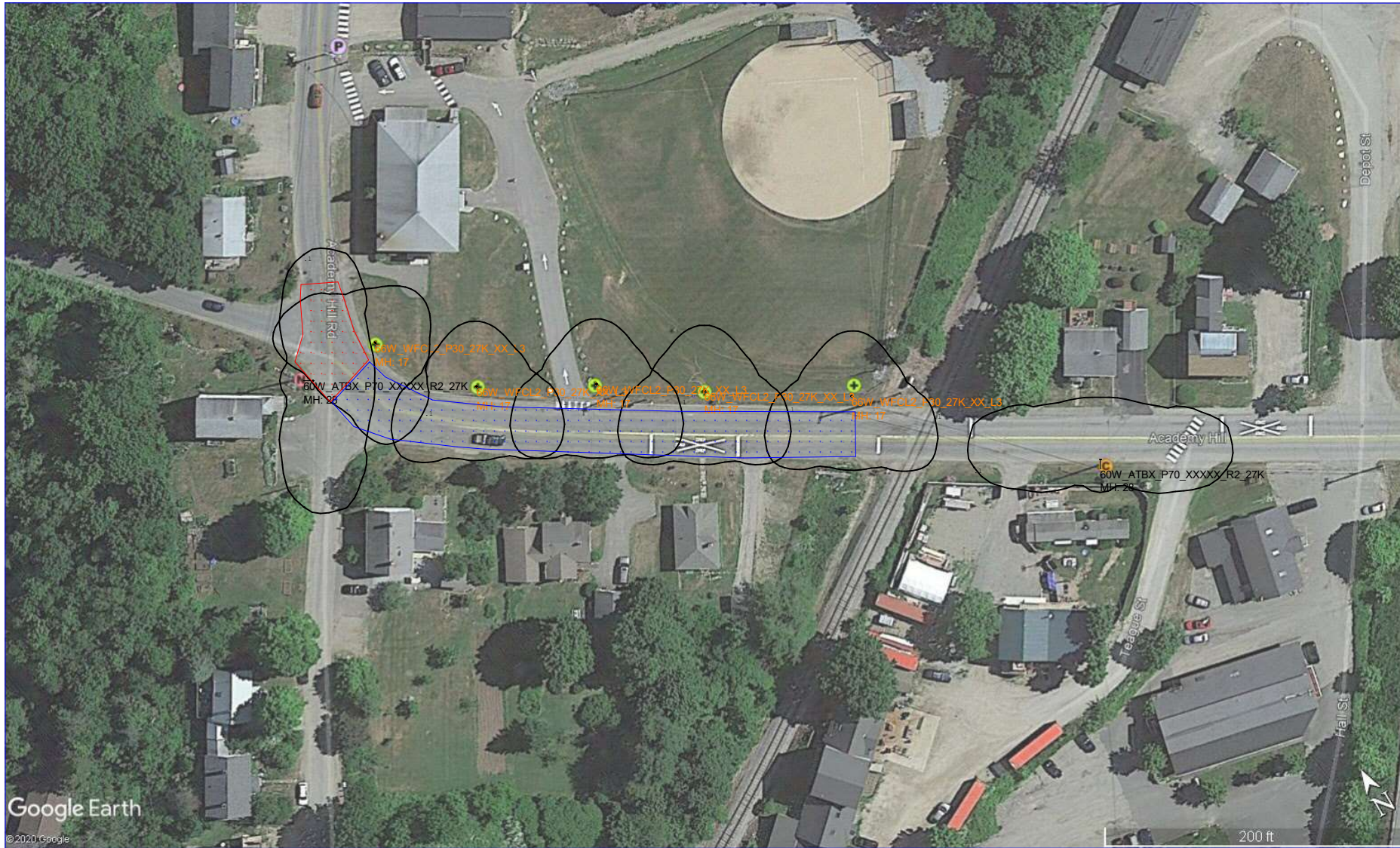


**20kV**  
Safeguard your investment from extreme voltage spikes with our new Extreme 20kV/10kA SPD



**HSS**  
*Minimize backlight with a louvered house-side-shield. Available as a factory option or field accessory*

# Design 05 - Academy Hill Rd.AGI



RP-8-18 Recommendations:  
 Major Low R3  
 Luminance: 0.6 cd/m2  
 Lavg/min: 3.5  
 Lmax/min: 6  
 Veiling: 0.3  
 Illuminance >= 0.9 fc / 9 lux

-----  
 Intersection RP-8-18 Recommendations:  
 Major / Local Low R3  
 Illuminance: 1.3 fc / 13 lux  
 Eavg/min: 3

Luminaire Schedule											
Symbol	Qty	Label	Arrangement	LLF	Arm	Lum. Watts	Lum. Lumens	[MANUFAC]	IES Class	BUG Rating	LER
—	2	60W_ATBX_P70_XXXXX_R2_27K	SINGLE	0.850	6	60	5942	American Electr	Type II	B2-U0-G2	99
+	5	66W_WFCL2_P30_27K_XX_L3	SINGLE	0.850	0	66	5353	Holophane	Type IV	B2-U0-G1	81

Calculation Summary												
Label	CalcType	Units	Avg	Max	Min	Avg/Min	Max/Min	Grid Z	Meter Tilt	Roadway Standard	LVRatio	RTable
Intersection	Illuminance	Fc	1.35	2.43	0.33	4.09	7.36	0	N.A	N.A.	N.A.	N.A.
Road	Illuminance	Fc	0.55	1.5	0.2	2.75	7.50	0	N.A	N.A.	N.A.	N.A.

DISCLAIMER: Calculations have been performed according to IESNA & CIE standards and good practice. Some differences between measured values and calculated results may occur due to tolerances in calculation methods, testing procedures, component performance, measurement techniques and field conditions such as voltage and temperature variations. Input data used to generate the attached calculations such as road dimensions, mounting height, roadway surface and ambient lights significantly affect the lighting calculations. If the real environment conditions do not match the input data, differences will occur between measured values and calculated values. This document is property of RealTerm Energy. This document should not be used by others for construction purposes.



Annapolis | Montreal  
 1 (866) 422-5200  
 realtermenergy.com  
 info@realtermenergy.com

A division of Realterm Global

**Photometric Model:**

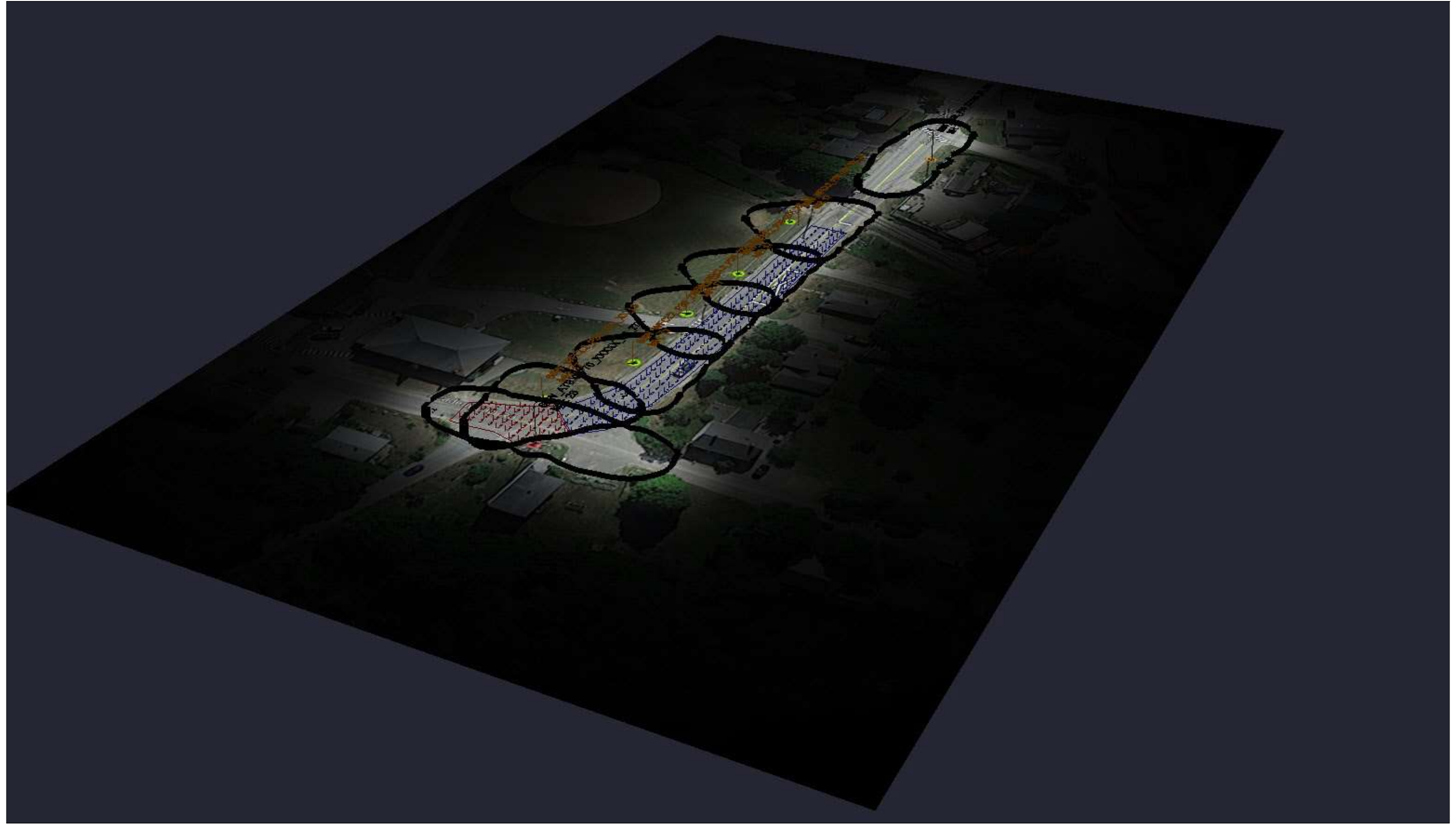
Roadway/Design 05 - Academy Hill Rd.AGI

Designed by: Ali Faghieh



Date : 2020-08-27  
 AGi32® Version 19.15.0

# Design 05 - Academy Hill Rd.AGI



DISCLAIMER: Calculations have been performed according to IESNA & CIE standards and good practice. Some differences between measured values and calculated results may occur due to tolerances in calculation methods, testing procedures, component performance, measurement techniques and field conditions such as voltage and temperature variations. Input data used to generate the attached calculations such as road dimensions, mounting height, roadway surface and ambient lights significantly affect the lighting calculations. If the real environment conditions do not match the input data, differences will occur between measured values and calculated values. This document is property of RealTerm Energy. This document should not be used by others for construction purposes.



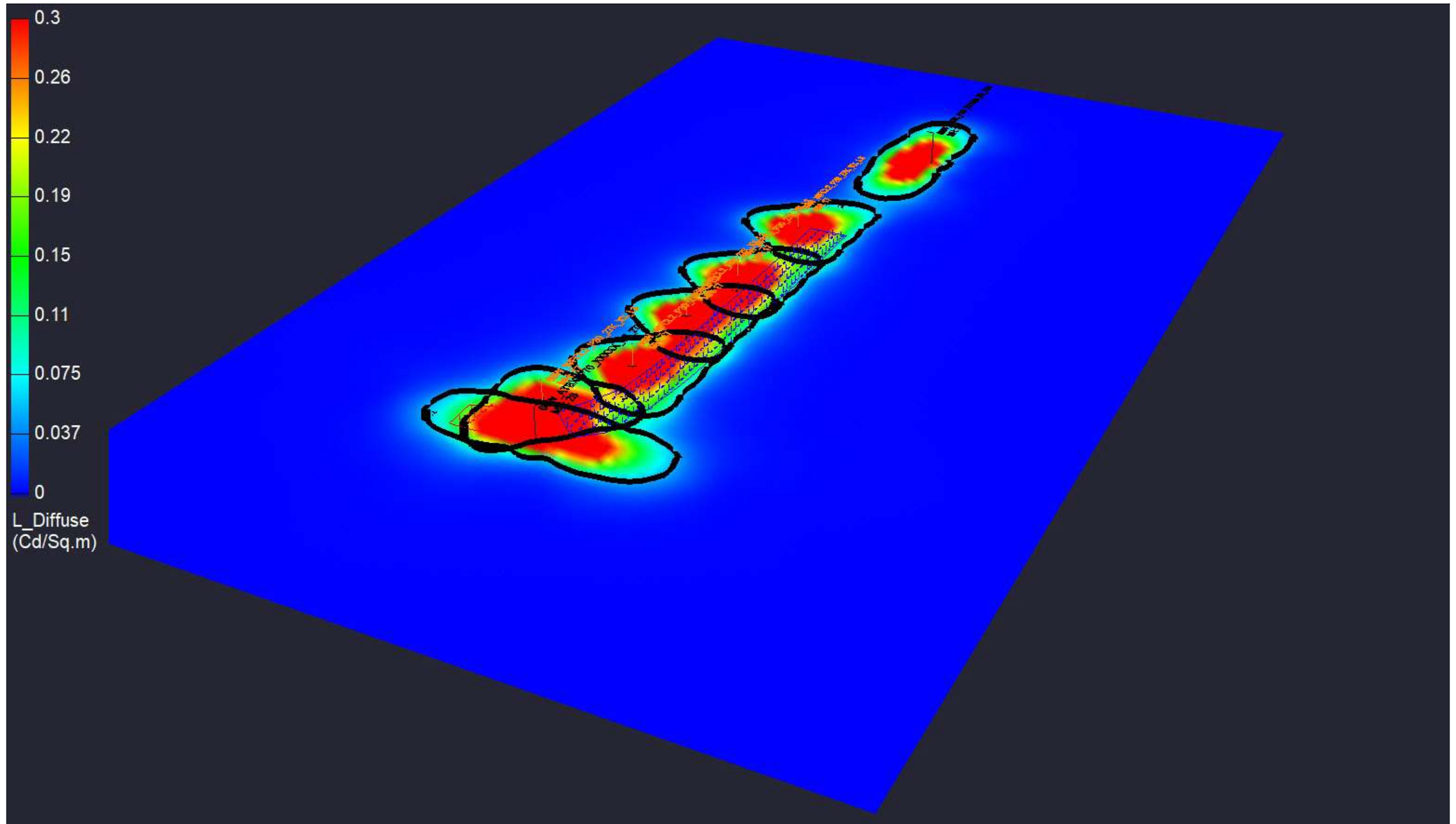
Annapolis | Montreal  
1 (866) 422-5200  
realtermenergy.com  
info@realtermenergy.com  
A division of Realterm Global

**Photometric Model:**  
Roadway:Design 05 - Academy Hill Rd.AGI  
Designed by: Ali Faghih



Date : 2020-08-27  
AGi32® Version 19.15.0  
**Page 2 of 3**

# Design 05 - Academy Hill Rd.AGI



DISCLAIMER: Calculations have been performed according to IESNA & CIE standards and good practice. Some differences between measured values and calculated results may occur due to tolerances in calculation methods, testing procedures, component performance, measurement techniques and field conditions such as voltage and temperature variations. Input data used to generate the attached calculations such as road dimensions, mounting height, roadway surface and ambient lights significantly affect the lighting calculations. If the real environment conditions do not match the input data, differences will occur between measured values and calculated values. This document is property of RealTerm Energy. This document should not be used by others for construction purposes.



**REALTERM**  
ENERGY

Annapolis | Montreal  
1 (866) 422-5200  
realtermenergy.com  
info@realtermenergy.com

A division of Realterm Global

**Photometric Model:**

Roadway:Design 05 - Academy Hill Rd.AGI

Designed by: Ali Faghih



Date : 2020-08-27

AGi32® Version 19.15.0

# Design 09 - Academy Hill Rd.AGI



RP-8-18 Recommendations:  
 Major Low R3  
 Luminance: 0.6 cd/m2  
 Lavg/min: 3.5  
 Lmax/min: 6  
 Veiling: 0.3  
 Illuminance >= 0.9 fc / 9 lux

Luminaire Schedule											
Symbol	Qty	Label	Arrangement	LLF	Arm	Lum. Watts	Lum. Lumens	[MANUFAC]	IES Class	BUG Rating	LER
☐	3	66W_WFCL2_P30_27K_XX_L3	SINGLE	0.850	0	66	5353	Holophane	Type IV	B2-U0-G1	81

Calculation Summary												
Label	CalcType	Units	Avg	Max	Min	Avg/Min	Max/Min	Grid Z	Meter Tilt	Roadway Standard	LVRatio	RTable
Road	Illuminance	Fc	0.70	2.5	0.1	7.00	25.00	0	N.A	N.A.	N.A.	N.A.

DISCLAIMER: Calculations have been performed according to IESNA & CIE standards and good practice. Some differences between measured values and calculated results may occur due to tolerances in calculation methods, testing procedures, component performance, measurement techniques and field conditions such as voltage and temperature variations. Input data used to generate the attached calculations such as road dimensions, mounting height, roadway surface and ambient lights significantly affect the lighting calculations. If the real environment conditions do not match the input data, differences will occur between measured values and calculated values. This document is property of RealTerm Energy. This document should not be used by others for construction purposes.



Annapolis | Montreal  
 1 (866) 422-5200  
 realtermenergy.com  
 info@realtermenergy.com  
 A division of Realterm Global

**Photometric Model:**  
 Roadway Design 09 - Academy Hill Rd.AGI  
 Designed by: Ali Faghieh





102 Main Street  
P.O. Box 258  
Bar Harbor, ME 04609  
Phone: 207.288.5919  
Fax: 207.288.2451  
Email: jody.brown@thefirst.com

October 7, 2020

Town of Newcastle  
ATTN: Jonathan Duke, Town Administrator  
4 Pump Street  
PO Box 386  
Newcastle, ME 04553

Dear Mr. Duke:

Thank you for the opportunity to provide this commitment letter for financing for the Town of Newcastle in the amount of \$61,707.47 for the purpose of financing installation of LED streetlights. The Note is offered subject to the following conditions:

1. Issue DATE: On or about October 14, 2020.
2. MATURITY: Principal and interest will be payable annually beginning October 14, 2021 over either a 5-year or 7-year term, to be determined at the Town's discretion.
3. INTEREST RATE: The rate of interest will be fixed for the repayment term based upon an actual/360-day year at:
  - a) **1.77%** if the Town selects a 5-year term, which would result in total interest of approximately \$3,363; or
  - b) **2.02%** if the Town selects a 7-year term, which would result in total interest of approximately \$5,160.
4. DENOMINATION: There will be one (1) Note issued in the denomination of sixty-one thousand seven-hundred seven dollars and forty-seven cents (\$61,707.47).
5. PREPAYMENT PROVISION: The Note may be prepaid at any time after October 14, 2020 without penalty.
6. FEES: None.

Bangor • Bar Harbor • Blue Hill • Boothbay Harbor • Calais • Camden • Damariscotta • Eastport  
Ellsworth • Northeast Harbor • Rockland • Rockport • Southwest Harbor • Waldoboro • Wiscasset

7. LEGAL OPINION: This commitment is not subject to a legal opinion from bond counsel.
8. CONFIRMATIONS: The Town must confirm in writing that:
  - a) The anticipated total tax-exempt borrowings for 2020 will not exceed \$10,000,000; and
  - b) The Town will comply with all aspects of the Tax Reform Act of 1986, as amended, including all provisions relating to arbitrage and rebate.
9. SUBMISSION OF FINANCIAL STATEMENTS: The Town will provide the Bank with year-end audited financial statements within one hundred fifty (150) days of the Town's fiscal year-end each year for the term of the loan. Such statements are to be prepared by an independent certified public accountant.
  - a) The enclosed Municipal Fact Sheet will be completed and returned with the signed commitment letter.

This commitment shall expire if it is not accepted in writing by a qualified officer of the Borrower by 5:00 P.M. October 14, 2020. Five (5) business days shall be required to prepare for a closing. Should you require any further information, please feel free to contact me as listed above. Again, thank you for allowing **First National Bank** to participate in this bid.

Very Truly Yours,



Tony C. McKim,  
President & Chief Executive Officer

AGREED TO ON BEHALF OF THE TOWN OF NEWCASTLE

Date: \_\_\_\_\_

By: \_\_\_\_\_

Print Name: \_\_\_\_\_

Its: \_\_\_\_\_

# Town Manager's Report

October 9, 2020

- The first property tax payment for this fiscal year was due on October 1<sup>st</sup>. Due to the difficulty of receiving payments on that date relating to postmarks, I typically hold off on compiling an analysis of how much the town has collected until the following week. As of today, the Town has received 48.9% of the property taxes for Fiscal Year 2021. While this amount is down slightly from a year ago, given the state of the economy and the ongoing pandemic, this is a good sign that Newcastle's residents are not falling behind on their taxes and able to meet those obligations. Typically excise tax is the best way to judge the health of the economy but due to the surge of registrations once the office re-opened in July, we have an artificially high amount of excise tax collections. To date, we've collected just shy of 60% of our budgeted excise taxes for the entire 2021 fiscal year.
- The big news of the week is absentee ballots. Prior to our receiving of our state ballots on Monday, we had just over 600 requests for absentee ballots. Due to this tremendous load on the office, we've brought in Karen Paz, who lives in the Mills, to serve as a deputy registrar of voters and assist us when needed. We were able to turn around these ballots and get them into the mail on Thursday. By Friday we have already seen residents dropping off their ballots in the drop box at the Town Office.
- As a word about conduct of the election... the drop box in the town office is a secured box. Joel was kind enough to construct a larger box to expand the number of ballots we can accept in the box. This is a particular issue on weekends when we are unable to empty the box as frequently. If there are any issues with the drop box, please have the residents hold on to their ballots and we can resolve any jams or stuck ballots within the mail slot. Recently, we heard a number of residents plan to vote in person rather than voting absentee. Those who've already received their ballot can hold onto the ballot and bring it with them to polls to be dropped off on Election Day.
- I plan to meet with Seth on Tuesday to review his status of the Academy Hill project and begin to wrap up the finances of the project. There may be items for you to discuss Tuesday evening, but we shall see. The end of the construction season is in sight and while I can understand the Board's desire for as much time as possible to consider items on its agenda, I wouldn't want to give away a pair of precious weeks where more projects might be completed this fall.
- I have included the information concerning the streetlight conversion and the lamp posts for the Academy Hill project. While we again received outstanding rates from The First concerning borrowing for the purchase of the lights, I need to verify locations and amounts of lights with Seth. I'm including these items for your review, but there may be last minute amendments. I'm expecting we will be able to fund the lamp posts for Academy Hill within the Academy Hill



project as the cost for those lights is dramatically less than we expected a year ago. The streetlights are moderately more expensive, but as of now, we expect to purchase three more lights than we were quoted when we circulated the RFP last winter/spring.

- After the report, you'll see an image of the mockup of the new town website from Civic CMS. The text is not accurate, but the overall style and look will be the direction we'll be moving.
- The executive session concerns the sale of tax acquired property. I have been pleasantly surprised with the response we've received since listing the properties with Bonne Stone. I'm hopeful we will be able to dispose of all four properties under our ownership by January 1.
- Many thanks to the fire department for once again removing the flags from the utility poles this afternoon. While I wish we were able to keep the flags up through Veterans' Day, the fall wind and severe weather are just too harsh to keep the flags up.
- Many of you may be aware of the flyer circulated in the mail last weekend in support of passage of the code. As you know, the Town did not send out this flyer, nor was it sent via information obtained from the town office, as the flyer was sent via bulk mail. The office was contacted, and I was asked to respond to the claims made therein. I want to make clear that the Town Office is a non-partisan operation in politics of all type... from national to local. Edging into waters of fact checking claims made within these types of campaigning is a slippery slope and one that I am loath to enter. When a document is being mistaken as something circulating from the Town Office I am glad to clarify the error.
- Lastly, it was requested at the end of the last meeting to see how other communities are operating their town offices as we edge further from the outright closures seen this past spring. I tasked Michelle with contacting area town offices and in her conversations with 9 town offices she found that roughly half were operating on an appointment-only basis. Four other offices were "open" but effectively operated with strict limitations on how many customers could be present. I spoke with our employees and gauged their sense of how the current appointment process worked. Though there was great apprehension about using appointments when we began in July, they were in unanimous agreement that the current process not only is more efficient for their work but also allows customers to get in and out of the office more swiftly in the past because both the clerk and the customer are better prepared. Therefore, I am not inclined to augment how the office operates at the moment.
- I do also want to share a conversation I had with a resident this week who was frustrated and unhappy with the current method of conducting business in the office. He's a long-time resident who hadn't made an appointment but came to the office anyway and wished to pay his taxes, register his car, speak with Jim Murphy, speak with me, and request an absentee ballot. He was used to the way it had always been and complained that the office used to consist of a single clerk who did it all. Shelly kindly let him in the office so that he can chat with Jim, took his tax payment, and then made an appointment for him the following day to handle the ballot and the car registration. Now I recognize he was unable to do all he hoped, but our staff did their best to

help him when he wanted help. The vast majority of residents who do walk up to the door are able to be helped when they ask for it, but it is a different method of operating and like so many things since March, we all must adapt.

It's easy to suggest our staff isn't doing anything because they aren't actively working with a customer, but the amount of work to process a single absentee ballot is not done in the blink of an eye. To process 600? You can only imagine. Put on top of that nearly nonstop phone calls from residents concerned about the status of their ballot thanks to an insane national political scene, threats on the validity of absentee balloting, threats to the operations of the US Postal Service, a fire on a USPS vehicle in Newcastle, and a global pandemic? Wow. Our staff aren't clerks... they are psychologists... evidenced by a 911 call that went out to Lincoln County dispatch on Friday afternoon because the drop box was plugged.

The kind words and thanks from the community for these employees are greatly appreciated for employees who are going above and beyond in challenging circumstances. We're going to get through this together.



Urgent Alert Bar Shows When You Have One. Does Not Show If You Don't [Read more »](#)



Subscribe



Minutes & Agenda



Maps & Property Info



MV Reg & Payments



Meeting Stream/Video



Road Repair

## Town News & Events



Dummy type below news item title. »

Vestibulum elementum euismod magna, sit suscipit vel. Pellentesque habitant morbi senectus egestas.



Dummy type below news item title. »

Vestibulum elementum euismod magna, sit suscipit vel. Pellentesque habitant morbi tristique senectus egestas ...



Dummy type below news item title. »

Pellentesque habitant morbi tristique senectus egestas.



Dummy type below news item title. »

Vestibulum elementum euismod magna, sit suscipit vel. Pellentesque habitant morbi tristique senectus egestas ...

+ VIEW ALL

February						
S	M	T	W	T	F	S
						1
2	3	4	5	6	7	8
9	10	11	12	13	14	15
16	17	18	19	20	21	22
23	24	25	26	27	28	29
30	31					

### Upcoming Meetings

#### Planning Commission Meeting

August 26, 2018 7pm

#### Historic District Commission

August 28, 2018 7pm

#### Zoning Board of Appeals

August 28, 2018 7pm

#### Planning Commission Meeting

August 26, 2018 7pm

#### Historic District Commission

August 28, 2018 7pm

#### Zoning Board of Appeals

August 28, 2018 7pm

ALL UPCOMING EVENTS



Jrnl	Invoice Description	Reference	Amount	Encumbrance
Description	Account	Proj		
<b>00257 BIG STATE INDUSTRIAL SUPPLY</b>				
0192	INV#1407214	BATTERIES		
	BATTERIES - INV#1407214	E 105-05-40	359.76	0.00
	PUB SAFETY - FIRE DEPT / NEW EQUIP			
		<b>Vendor Total-</b>	<b>359.76</b>	
<b>00033 CENTRAL MAINE POWER CO</b>				
0192	SEVERAL INVOICES	ELECTRICITY		
	35013844770 - STR LIGHTS	E 101-55-05	597.22	0.00
	GEN GOVT - ANIMAL CNTRL / ST LIGHTS			
	35011988843 - T.O.	E 101-65-02	132.61	0.00
	GEN GOVT - TOWN OFFICE / ELECTRICITY			
	35011641467 - F.D.	E 105-66-02	171.53	0.00
	PUB SAFETY - FIRE STA/COM / ELECTRICITY			
	35016922797 - SANDLOT	E 107-50-19	17.71	0.00
	PUBLIC WORKS - PUBLIC WORKS / MILLS RD ELE			
		<b>Vendor Total-</b>	<b>919.07</b>	
<b>00000 CIVICPLUS</b>				
0192	INV#202905	WEBSITE		
	WEBSITE INV#202905	E 101-25-12	4,500.00	0.00
	GEN GOVT - OPERATIONS / WEBSITE			
		<b>Vendor Total-</b>	<b>4,500.00</b>	
<b>00212 CREATIVE DIGITAL IMAGING</b>				
0192	POSTAGE FOR REFERENDUM	POSTAGE		
	POSTAGE FOR REFERENDUM	E 101-25-05	490.52	0.00
	GEN GOVT - OPERATIONS / POSTAGE/ENV			
		<b>Vendor Total-</b>	<b>490.52</b>	
<b>00089 FIRE TECH &amp; SAFETY OF N.E. INC</b>				
0192	INV#190202	BOOTS/HELMETS		
	INV#190202 - BOOTS/HELMET	E 105-05-45	2,275.00	0.00
	PUB SAFETY - FIRE DEPT / TURN OUT			
		<b>Vendor Total-</b>	<b>2,275.00</b>	
<b>01272 FOUR SEASONS JANITORIAL CONT., INC</b>				
0192	WEEKLY CLEANING SERVICES	INV#15253		
	Town Office Cleaning	E 101-65-06	274.03	0.00
	GEN GOVT - TOWN OFFICE / JANITORIAL			
	FD - Community Room	E 105-04-04	173.49	0.00
	PUB SAFETY - CONTRACTOR / JANIT C.R.			
		<b>Vendor Total-</b>	<b>447.52</b>	
<b>00010 GREAT SALT BAY COMM. SCHOOL</b>				
0192	SCHOOL/ELEMENTARY	OCTOBER		
	SCHOOL/ELEM OCT PYMT	E 116-60-01	147,802.97	0.00
	SCHOOLS - SCHOOLS / ELEMENTARY			
		<b>Vendor Total-</b>	<b>147,802.97</b>	
<b>00011 GREAT SALT BAY SANITARY DIST.</b>				
0192	RIVER RD/16 HYDRANTS	ACCT #4022		
	(16) HYDRANTS	E 101-55-04	4,110.41	0.00
	GEN GOVT - ANIMAL CNTRL / (16) HYDRANT			
		<b>Vendor Total-</b>	<b>4,110.41</b>	
<b>00897 HAGAR ENTERPRISES, INC</b>				
0192	DITCHING/SURF PAVING	INV#3397 & 3408		
	LEWIS HILL - DITCHING	E 107-50-11	8,000.00	0.00
	PUBLIC WORKS - PUBLIC WORKS / GEN CONTRACT			
	W HAMLET - SURF PAVING	E 107-50-02	73,600.00	0.00
	PUBLIC WORKS - PUBLIC WORKS / CAPITAL PROJ			
		<b>Vendor Total-</b>	<b>81,600.00</b>	
<b>00449 HYGRADE BUSINESS GROUP</b>				

Jrnl	Invoice Description	Reference	Proj	Amount	Encumbrance
Description	Account				
0192	Core Code Mailing	Inv#679572			
	Core Code Mailing	E 101-25-05		323.70	0.00
	GEN GOVT - OPERATIONS / POSTAGE/ENV				
		<b>Vendor Total-</b>		<b>323.70</b>	
<b>00013 LINCOLN COUNTY NEWS</b>					
0192	ADS - 9/3-9/24/20	LCNEWS ADS			
	LCN ADS FOR SEPT	E 101-25-55		376.26	0.00
	GEN GOVT - OPERATIONS / ADS				
		<b>Vendor Total-</b>		<b>376.26</b>	
<b>00115 LINCOLN COUNTY REG. DEEDS</b>					
0192	DISCHARGES	9/1-9/30/20			
	DISCHARGES 9/1-9/30/20	E 101-25-91		1,161.80	0.00
	GEN GOVT - OPERATIONS / RECORDINGS				
		<b>Vendor Total-</b>		<b>1,161.80</b>	
<b>00005 LOCKBOX #936724</b>					
0192	TRANSCO CONTRACT	IN2565144			
	LASER CONTRACT-OCT	E 101-26-01		20.85	0.00
	GEN GOVT - LEASES / COPIER				
		<b>Vendor Total-</b>		<b>20.85</b>	
<b>00121 LOUIS DOE, INC.</b>					
0192	3 SEPERATE INVOICES	2009-315596			
	FLOWERS/PUMPKINS	E 101-25-95		27.92	0.00
	GEN GOVT - OPERATIONS / SUPPLIES				
	NUTS/BOLTS/ETC	E 107-50-11		3.40	0.00
	PUBLIC WORKS - PUBLIC WORKS / GEN CONTRACT				
		<b>Vendor Total-</b>		<b>31.32</b>	
<b>00155 POSTMASTER-NEWCASTLE, ME POST OFC</b>					
0192	POSTAGE STAMPS	10/12/2020	*** PAID ***	Check #	24824
	10/1/2020-POSTAGE STAMPS	E 101-25-05		55.00	0.00
	GEN GOVT - OPERATIONS / POSTAGE/ENV				
		<b>Invoice Total-</b>		<b>55.00</b>	
0192	POSTAGE FOR BALLOTS	558x70=390.60	*** PAID ***	Check #	24839
	POSTAGE FOR AB BALLOTS	E 101-25-05		390.60	0.00
	GEN GOVT - OPERATIONS / POSTAGE/ENV				
		<b>Invoice Total-</b>		<b>390.60</b>	
		<b>Vendor Total-</b>		<b>445.60</b>	
<b>00118 RANDY'S JOB SERVICE/SALT BAYS GARBO</b>					
0192	SEPT TRASH REMOVAL	INV#350024			
	SEPT TRASH REMOVAL	E 101-65-04		25.00	0.00
	GEN GOVT - TOWN OFFICE / MAINT/REPAIR				
		<b>Vendor Total-</b>		<b>25.00</b>	
<b>00102 READY REFRESH/NESTLE</b>					
0192	2 SEPERATE INVOICES	TOWN OFF & FIRE			
	INV#20I04240005111	E 101-25-95		113.88	0.00
	GEN GOVT - OPERATIONS / SUPPLIES				
	INV#20I0310022652	E 105-05-40		110.61	0.00
	PUB SAFETY - FIRE DEPT / NEW EQUIP				
		<b>Vendor Total-</b>		<b>224.49</b>	
<b>00395 SEACOAST SECURITY &amp; TELE.</b>					
0192	ALARM MONITORING	INV#676857			
	ALARM MONITORING	E 101-65-04		90.00	0.00
	GEN GOVT - TOWN OFFICE / MAINT/REPAIR				
		<b>Vendor Total-</b>		<b>90.00</b>	
<b>00189 TIDEWATER TELECOM INC</b>					
0192	PHONE LINES	T.O. & FIRE DEP			
	TOWN OFFICE LINES	E 101-65-05		194.24	0.00

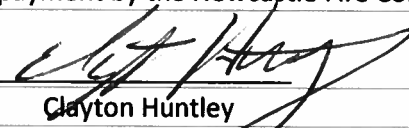
Jrnl	Invoice Description	Reference	Proj	Amount	Encumbrance
Description	Account				
FIRE DEPT	GEN GOVT - TOWN OFFICE / TELEPHONES E 105-05-09			59.00	0.00
	PUB SAFETY - FIRE DEPT / PHONES				
<b>Vendor Total-</b>				<b>253.24</b>	
<b>00023 TREASURER, STATE OF ME-BMV</b>					
0192	9/18-9/25 & 9/25-10/2	BMV REPORTS			
	9/18-10/2/20 - BMV REPOR	G 1-345-00		6,900.20	0.00
	GEN'L GOV. / STATE MV FEE				
<b>Vendor Total-</b>				<b>6,900.20</b>	
<b>00027 TREASURER, STATE OF ME-IFW</b>					
0192	MOSES - SEPTEMBER	ACCT#111092			
	MOSES - SEPT REPORT	G 1-350-00		1,802.50	0.00
	GEN'L GOV. / STATE IFW \$				
<b>Vendor Total-</b>				<b>1,802.50</b>	
<b>00938 U.S. CELLULAR</b>					
0192	Acct 489087610/HUNTLEY	FIRE COMPANY			
	CLAYTON'S CELL	E 105-05-09		51.37	0.00
	PUB SAFETY - FIRE DEPT / PHONES				
<b>Vendor Total-</b>				<b>51.37</b>	
<b>01590 W.B. MASON</b>					
0192	OFFICE SUPPLIES	INV#214093970			
	COPY PAPER	E 101-25-95		39.96	0.00
	GEN GOVT - OPERATIONS / SUPPLIES				
	FILE FOLDERS	E 101-25-95		55.99	0.00
	GEN GOVT - OPERATIONS / SUPPLIES				
<b>Vendor Total-</b>				<b>95.95</b>	
<b>Prepaid Total-</b>				<b>445.60</b>	
<b>Current Total-</b>				<b>253,861.93</b>	
<b>Warrant Total-</b>				<b>254,307.53</b>	

THIS IS TO CERTIFY THAT THERE IS DUE AND CHARGEABLE TO THE APPROPRIATIONS LISTED ABOVE AND YOU ARE DIRECTED TO PAY UNTO THE PARTIES NAMED IN THIS SCHEDULE.

DATE: 10/13, 2020

BRIAN FOOTE  
TOR GLENDINNING  
ROBERT NELSON  
JOEL LIND  
WANDA WILCOX

\_\_\_\_\_  
\_\_\_\_\_  
\_\_\_\_\_  
\_\_\_\_\_  
\_\_\_\_\_

Fire Dept. Warrant #06		Journal # _____	
Date--09/29/2020			
	VENDOR/DESCRIPTION	\$ AMOUNT	GL ACCOUNT #
	Big State Industrial--Batteries	\$359.76	E 105-05-40 ✓
2	Fire Tech Safety--boots/helmets	\$2,275.00	E 105-05-45 ✓
3	Ready Fresh--water	\$110.61	E 105-05-40 ✓
4	Tidewater--Tele.	\$59.00	E 105-05-09 ✓
5	US Cellular--C-Phone	\$51.37	E 105-05-09 ✓
6			E 105-05-
7			E 105-05-
8			E 105-05-
9			E 105-05-
10			E 105-05-
11			E 105-05-
12			E 105-05-
13			E 105-05-
14			E 105-05-
15			E 105-05-
16	Total	\$2,855.74	
17			E 105-05-
18			E 105-05-
The above bills are respectfully submitted for payment by the Newcastle Fire Company Inc.		Charges to Accts. Are in Red Credits to Accts. Are in Black	
 Clayton Huntley Fire Chief			

Jrnl	Invoice Description	Reference			
Description	Account	Proj	Amount	Encumbrance	
00897	HAGAR ENTERPRISES, INC				
0194	ACADEMY HILL PAY REQ #10	PERIOD: 9/30/20			
	ACADEMY HILL PAY REQ 10	E 202-50-47	76,060.56	0.00	
	ROADS RES - PUBLIC WORKS / ACADEMY HILL				
		<b>Vendor Total-</b>	<b>76,060.56</b>		
		<b>Prepaid Total-</b>	<b>0.00</b>		
		<b>Current Total-</b>	<b>76,060.56</b>		
		<b>Warrant Total-</b>	<b>76,060.56</b>		

THIS IS TO CERTIFY THAT THERE IS DUE AND CHARGEABLE TO THE APPROPRIATIONS LISTED ABOVE AND YOU ARE DIRECTED TO PAY UNTO THE PARTIES NAMED IN THIS SCHEDULE.

DATE: 10/13, 2020

BRIAN FOOTE  
TOR GLENDINNING  
ROBERT NELSON  
JOEL LIND  
WANDA WILCOX

\_\_\_\_\_  
\_\_\_\_\_  
\_\_\_\_\_  
\_\_\_\_\_  
\_\_\_\_\_



**AIA Type Document  
Application and Certification for Payment**

TO (OWNER): Town of Newcastle  
PO Box 386  
Newcastle, ME 04553

PROJECT: Academy Hill Reconstruction

APPLICATION NO: 10  
PERIOD TO: 9/30/2020

DISTRIBUTION TO:  
- OWNER  
- ARCHITECT  
- CONTRACTOR

FROM (CONTRACTOR): Hagar Enterprises, Inc  
54 Biscay Road  
Damariscotta, ME 04543

VIA (ARCHITECT):

ARCHITECT'S  
PROJECT NO.: 2019-015

CONTRACT FOR: Academy Hill Reconstruction

CONTRACT DATE: 11/19/2019

**CONTRACTOR'S APPLICATION FOR PAYMENT**  
Application is made for Payment, as shown below, in connection with the Contract Continuation Sheet, AIA Type Document is attached

1. ORIGINAL CONTRACT SUM ..... \$ 1,762,518.25

2. Net Change by Change Orders ..... \$ 0.00

3. CONTRACT SUM TO DATE (Line 1 + 2) ..... \$ 1,762,518.25

4. TOTAL COMPLETED AND STORED TO DATE ..... \$ 1,581,388.49

5. RETAINAGE:

a. 4.91 % of Completed Work ..... \$ 77,663.41

b. 0.00 % of Stored Material ..... \$ 0.00

Total retainage (Line 5a + 5b) ..... \$ 77,663.41

6. TOTAL EARNED LESS RETAINAGE ..... \$ 1,503,725.08  
(Line 4 less Line 5 Total)

7. LESS PREVIOUS CERTIFICATES FOR PAYMENT ..... \$ 1,427,664.52  
(Line 6 from prior Certificate)

8. CURRENT PAYMENT DUE ..... \$ 76,060.56

9. BALANCE TO FINISH, INCLUDING RETAINAGE ..... \$ 258,793.17  
(Line 3 less Line 6)

CHANGE ORDER SUMMARY	ADDITIONS	DEDUCTIONS
Total changes approved in previous months by Owner	0.00	0.00
Total approved this Month	0.00	0.00
TOTALS	0.00	0.00
NET CHANGES by Change Order	0.00	0.00

The Undersigned Contractor certifies that to the best of the Contractor's knowledge, information and belief the work covered by this application for Payment has been completed in accordance with the Contract Documents, that all amounts have been paid by the Contractor for Work for which previous Certificates for Payment were issued and payments received from the owner, and that current payment shown herein is now due.

CONTRACTOR: Hagar Enterprises, Inc  
54 Biscay Road Damariscotta, ME 04543

By: Seth Hagar Date: 9/30/20  
Seth Hagar, Vice President

State of: ME  
County of: Lincoln

Subscribed and Sworn to before me this 30<sup>th</sup> Day of Sept 2020  
Notary Public: Deanne M. Murray

My Commission Expires: 01/03/2027

**ARCHITECT'S CERTIFICATE FOR PAYMENT**

In Accordance with the Contract Documents, based on on-site observations and the data comprising the above application, the Architect certifies to owner that to the best of the Architect's knowledge, information and belief the Work has progressed as indicated the quality of the work is in accordance with the Contract Documents, and the Contractor is entitled to payment of the AMOUNT CERTIFIED.

AMOUNT CERTIFIED ..... \$  
(Attach explanation if amount certified differs from the amount applied. Initial all figures on this Application and on the Continuation Sheet that are changed to conform to the amount certified.)

ARCHITECT  
By \_\_\_\_\_ Date: \_\_\_\_\_

This Certificate is not negotiable. The AMOUNT CERTIFIED is payable only to the Contractor named herein. Issuance, Payment and acceptance of payment are without prejudice to any rights of the Owner or Contractor under this Contract

AIA Type Document  
Application and Certification for Payment

**TO (OWNER):** Town of Newcastle  
 PO Box 386  
 Newcastle, ME 04553  
  
**FROM (CONTRACTOR):** Hagar Enterprises, Inc  
 54 Biscay Road  
 Damariscotta, ME 04543  
  
**PROJECT:** Academy Hill Reconstruction  
**APPLICATION NO:** 10  
**PERIOD TO:** 9/30/2020  
  
**VIA (ARCHITECT):** ARCHITECT'S  
 PROJECT NO: 2019-015

**DISTRIBUTION TO:**  
 - OWNER  
 - ARCHITECT  
 - CONTRACTOR

CONTRACT FOR: Academy Hill Reconstruction      CONTRACT DATE: 11/19/2019

ITEM	DESCRIPTION	PLAN QTY	UNIT PRICE	SCHEDULED VALUE	PREVIOUSLY COMP QTY/%	PREVIOUS APPL	COMP QTY/% THIS PERIOD	COMP AMT THIS PERIOD	STORED MATERIAL	COMPLETED AND STORED	%	BALANCE
1	Base Bid excluding Allowances		.0000	1,392,768.50	96.5000%	1,344,021.59	3.500%	48,746.90	0.00	1,392,768.49	100.00	.01
1	Base Bid including Additional Items		.0000	26,500.00		0.00	.000%	0.00	0.00	0.00	0.00	26,500.00
1a	Base Bid Rail Road Coordination Allowance		.0000	10,000.00		0.00	.000%	0.00	0.00	0.00	0.00	10,000.00
1b	Base Bid Ledge Removal Allowance		.0000	15,000.00		0.00	.000%	0.00	0.00	0.00	0.00	15,000.00
2	Option 1: Mill Road Crossing		.0000	51,755.75		0.00	.000%	0.00	0.00	0.00	0.00	51,755.75
5	Option 4: Pedestrian Lighting excluding Allowances		.0000	77,874.00		0.00	.000%	0.00	0.00	0.00	0.00	77,874.00
6	Option 5: Shim Coat Road		.0000	32,000.00	100.0000%	32,000.00	.000%	0.00	0.00	32,000.00	100.00	.00
7	Alternate 1: Granite Curbing (less 160')		.0000	156,620.00	80.0000%	125,296.00	20.000%	31,324.00	0.00	156,620.00	100.00	.00

**REPORT TOTALS**  
 \$1,762,518.25      \$1,501,317.59      \$80,070.90      \$1,581,388.49  
 \$0.00      \$181,129.76